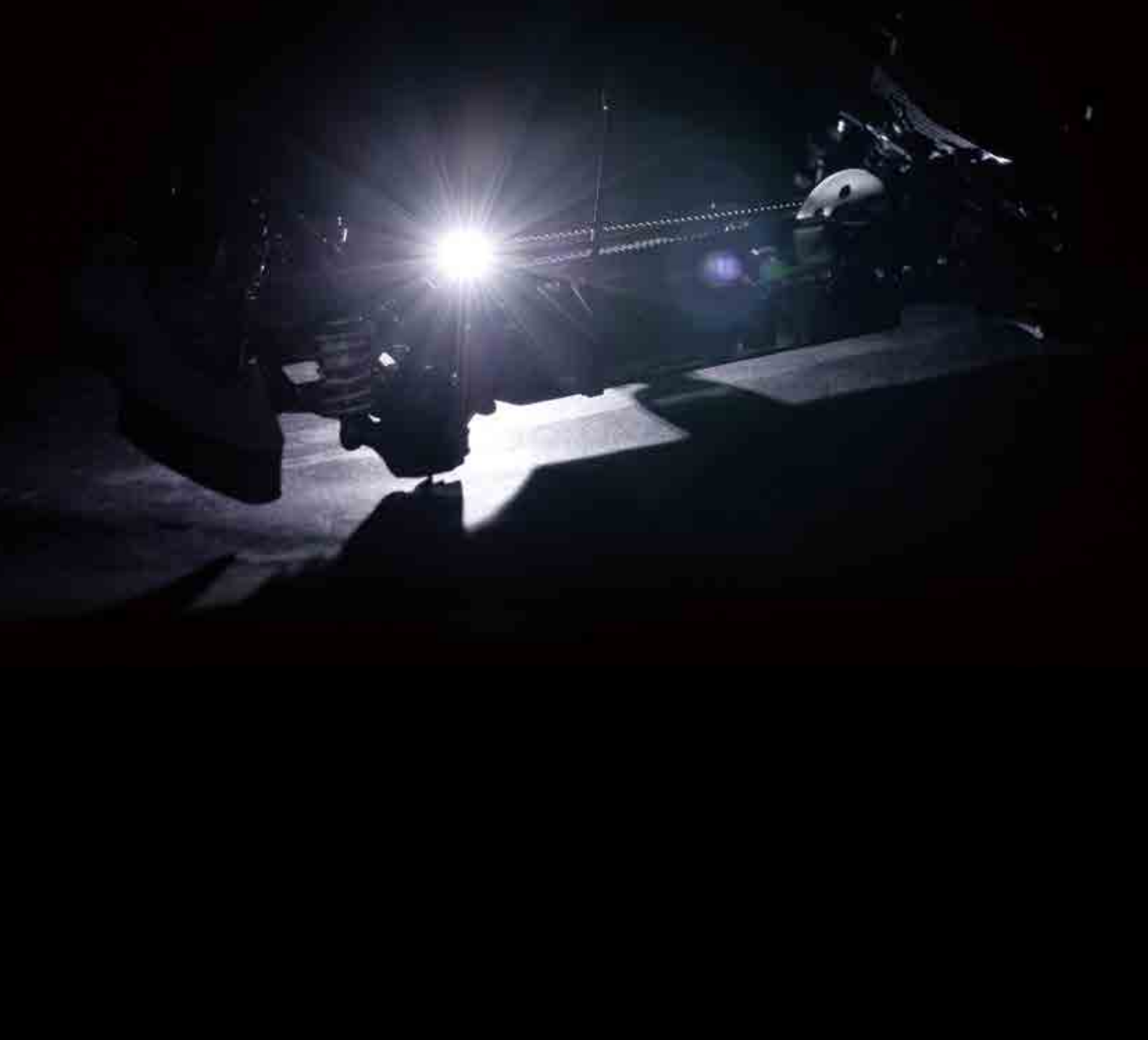


# STMT 601

*1/10 Electric Touring Car*





Thank you for choosing the bmt. Before you start building the bmt, we suggest you read through the instruction manual first. Be sure to check all assembly and performance tips before you start. We hope you enjoy the fine building processes.

### **General Building Tips:**

- ▶ Read the instruction manual before building.
- ▶ Clear a work area and try to work on a light color towel to avoid missing dropped parts.
- ▶ Don't forge the thread lock. Be certain to use thread-lock on all the machine screws that thread into metal. Put it on the screws that are secured with locknuts and the setscrews that secure the linkage stops, too. Don't skimp on the thread-lock or you'll be searching in the dirt for screws that vibrated loose.
- ▶ Don't over-tighten fasteners. Many assembly problems are caused by over-tightening screws or nuts. Don't use too large a grip. Please go slowly and feel the resistance build. Just snug it up.
- ▶ As you put more time and runs on the car, the suspension arms, and basically anything else that moves, can stretch and wear. Though we have a very rigorous quality control program and make every effort to ensure that the parts have the best possible fit when you get them. Unfortunately there is very little, or nothing we can do to prevent these parts from wearing out. When the arms begin to wear you will notice that some slop develops between the carrier or hub and the arms. This slop can be taken out by shimming the arm, hub or carrier. If you take a look at any of the factory driver's cars you will definitely find that they use shims to take up some of the slop that occurs over a period of time. The shims can also be used on the inside of the suspension arms in the same manner. When shimming the parts, care must be taken not to add too many shims. The parts must still move freely without binding.
- ▶ When it doesn't fit, please double check. If an assembly is not going together correctly, then either there really is a bad fit (e.g. a part is damaged or defective) or a mistake in assembly. Always re-read the instructions when there are any problems. If you cannot figure out what's wrong, always ask dealer or distributor. Don't use force beyond what the instructions call for.
- ▶ Using the right tools makes assembly much easier. The instructions below finely indicate you what tools to get to make things easier. We don't want to scare you by saying that all these tools are required, but you will have an easier time if you have them. Borrow them from a friend to check if necessary.
- ▶ The assembly is arranged so that you will open the bag and finish that bag before you go on to the next bag. Sometimes, you will have parts remaining at the end of a bag. These will become part of the following bags.

### **A Good Dealer Is Extremely Important!!**

A good hobby dealer can help you with most assembly problems you might encounter. This is the main reason why you should buy your kits from a good dealer rather than from the cheapest dealer. Bring your problematic parts to the dealer and, most likely, you'll walk away soon thereafter with the problem solved. If you think that you really don't have the mechanical skills to complete the assembly, you may pay your dealer to finish the job for you. We can recommend good dealers to you if you need. Please send us mails for more information.





PA116203  
E-clip 5



PA116238  
2x12.8mm Pin



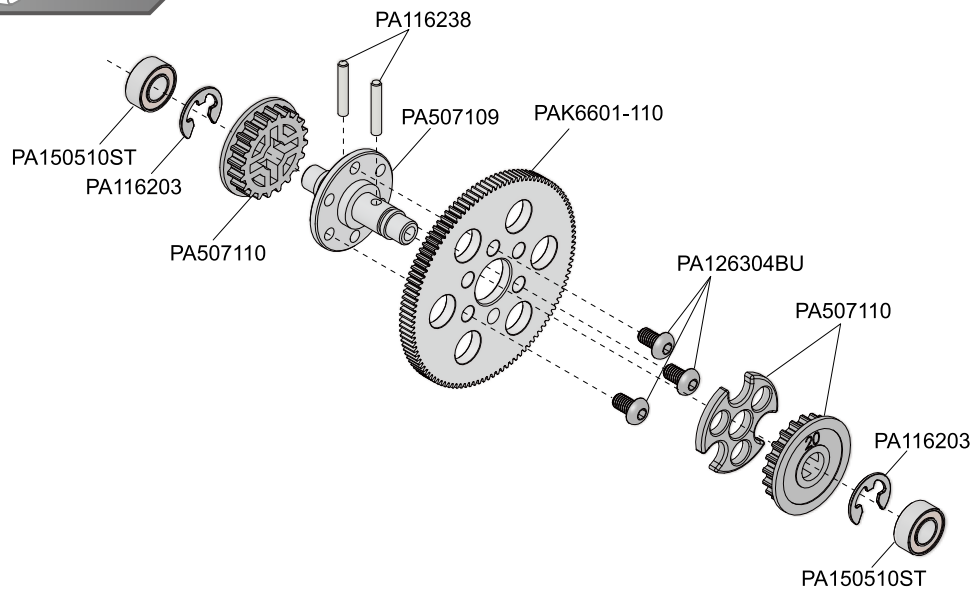
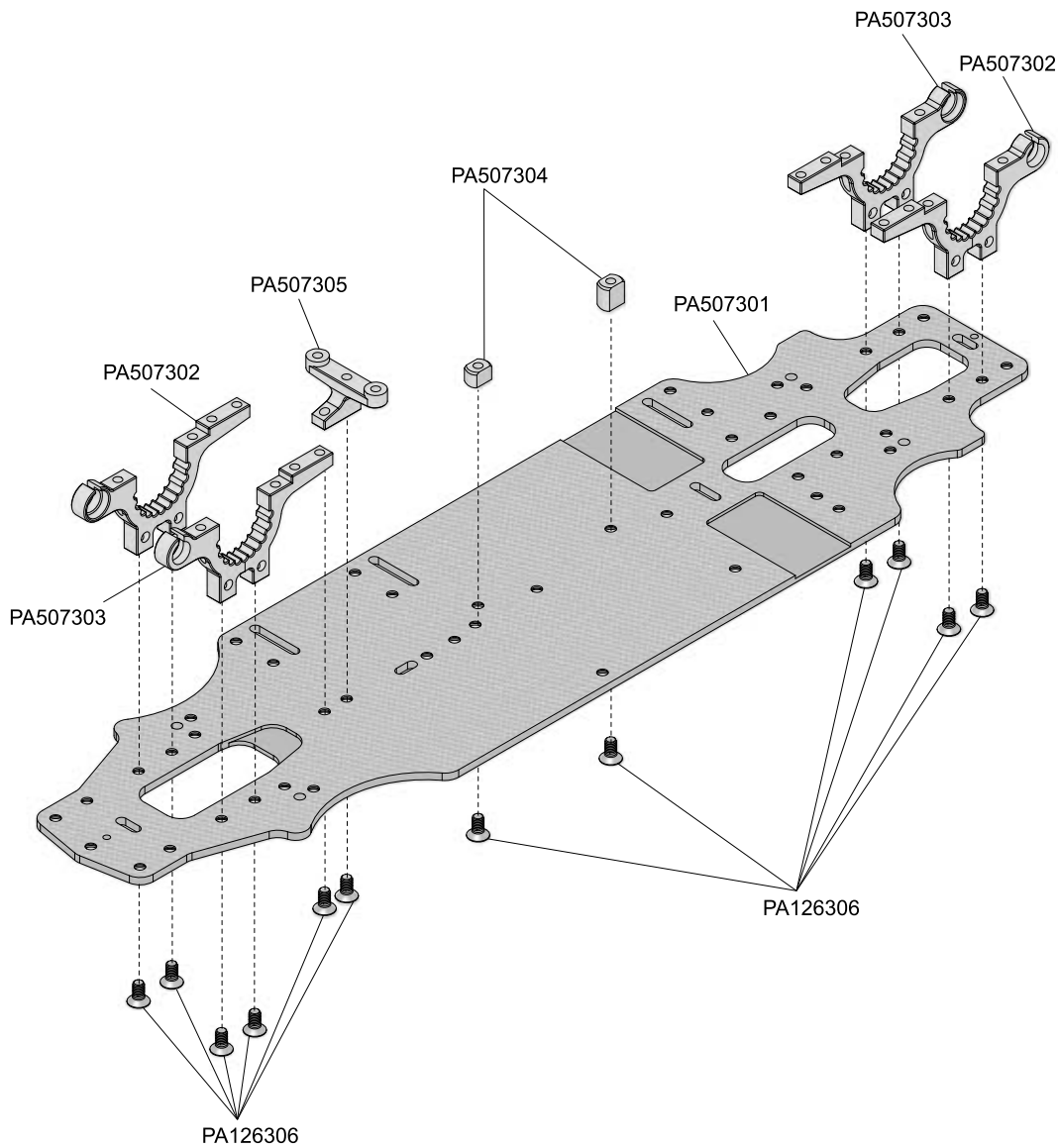
PA126304BU  
M3X5mm BH Screw

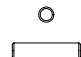

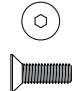
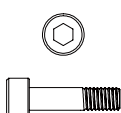
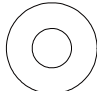

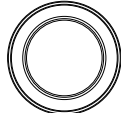



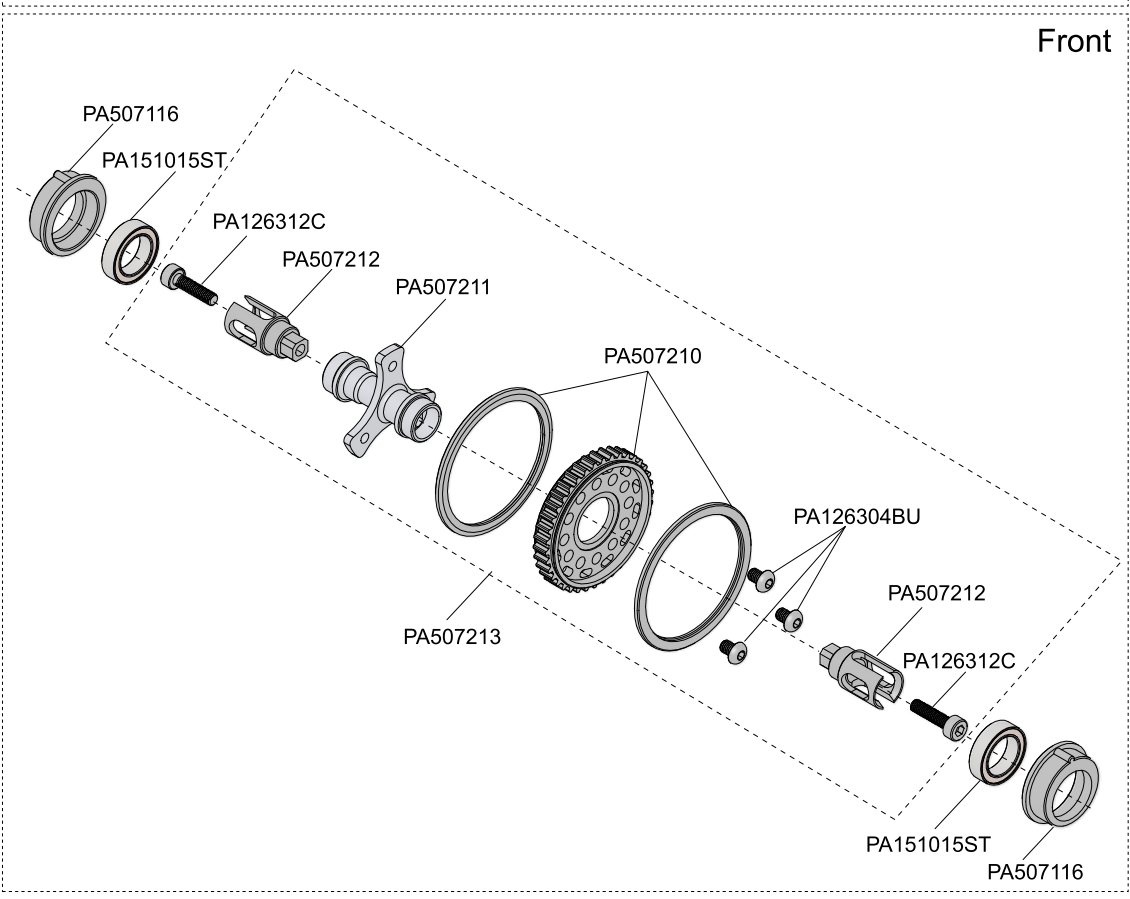
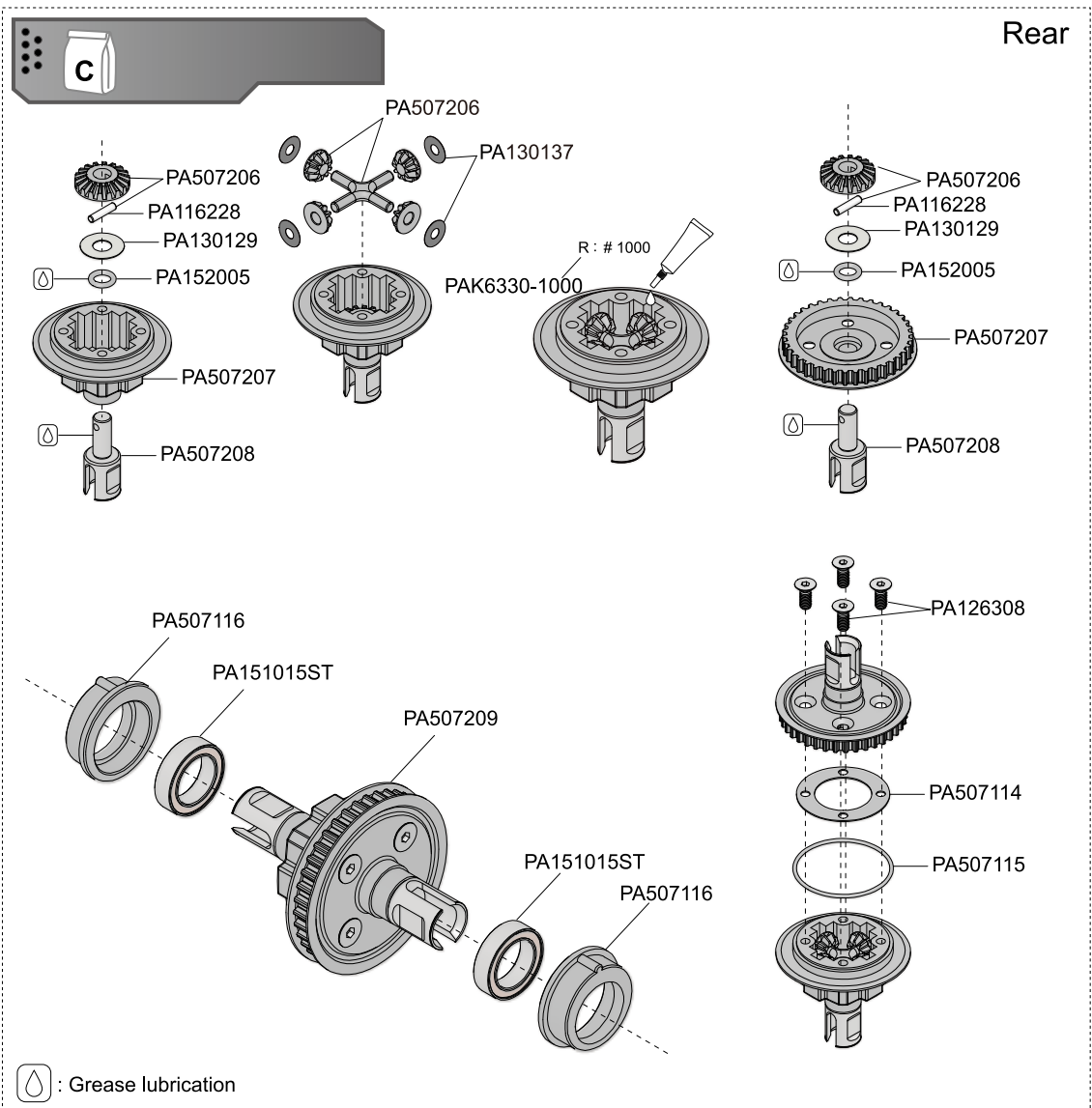
PA126306  
3x6mm Steel FH Screw



PA150510ST  
5x10x4mm Steel Bearing



	PA116228 2x9.0mm Pin
	PA126304BU M3X4mm BH Screw
	PA126308 3x8mm Steel Flat Head Screw
	PA126312C 3X12mm CAP Screw
	PA130129 5.2x12x0.2mm Shim
	PA130137 3.1x8x0.3mm Washer
	PA151015ST 10x15x4mm Steel Bearing
	PA152005 4.7x1.42 O-RING







PA116216  
3X6X1mm Washer



PA126305  
3x5mm Steel FH  
Screw



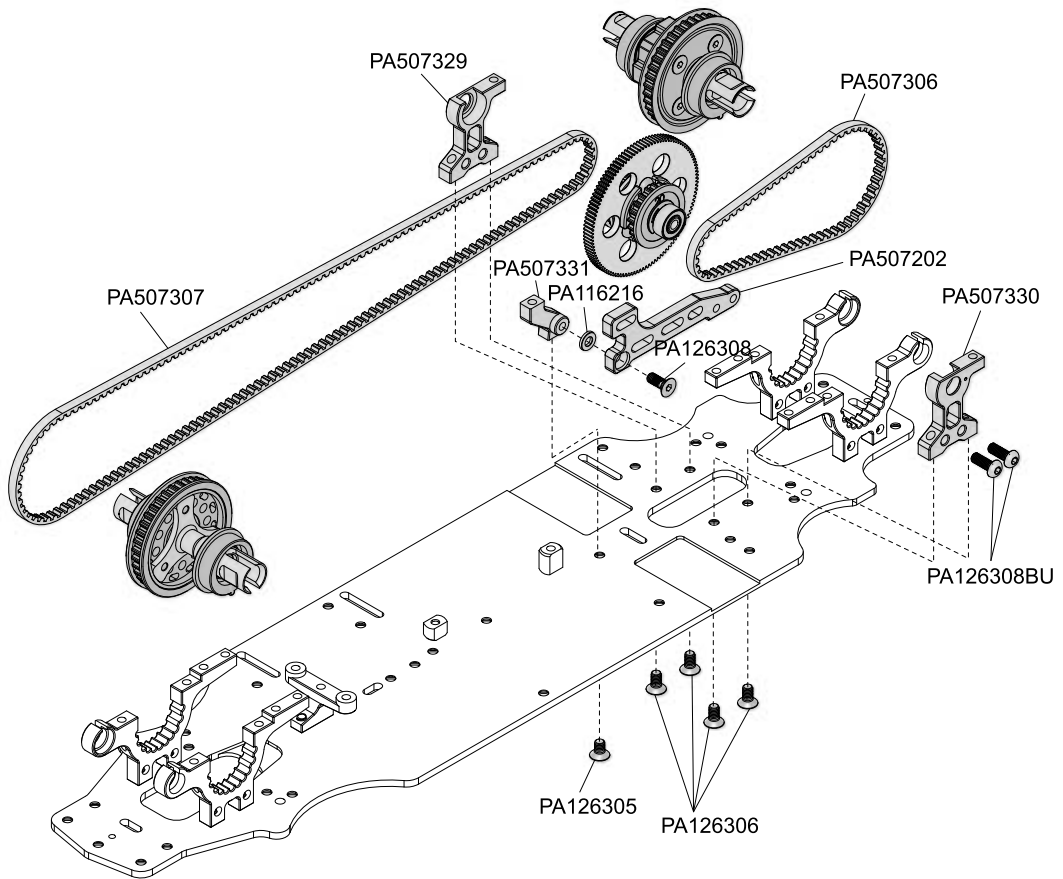
PA126306  
3x6mm Steel F.H.  
Screw



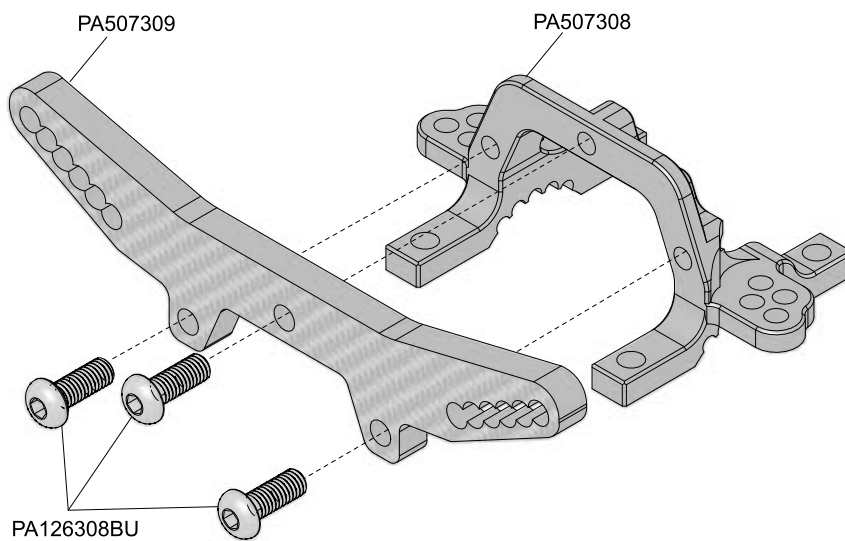
PA126308  
3x8mm Steel F.H.  
Screw

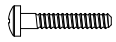


PA126308BU  
3X8mm Button  
Head Screw



Front





PA126212BU  
2X12mm BH Screw



PA126306BU  
3x6mm Button  
Head Screw



PA126308BU  
3x8mm Steel Button  
Head Screw



PA126212BU

PA507217

PA126308BU

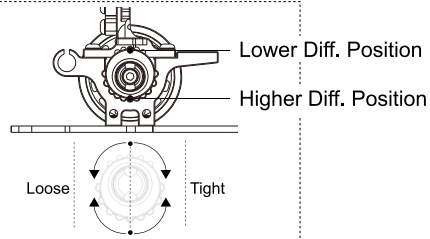
PA507310

PA126308BU

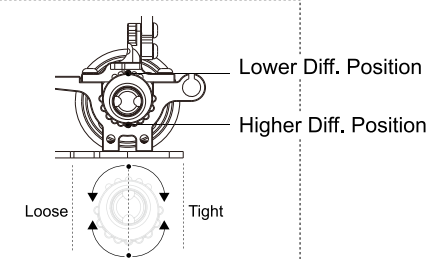
PA507308



Front:

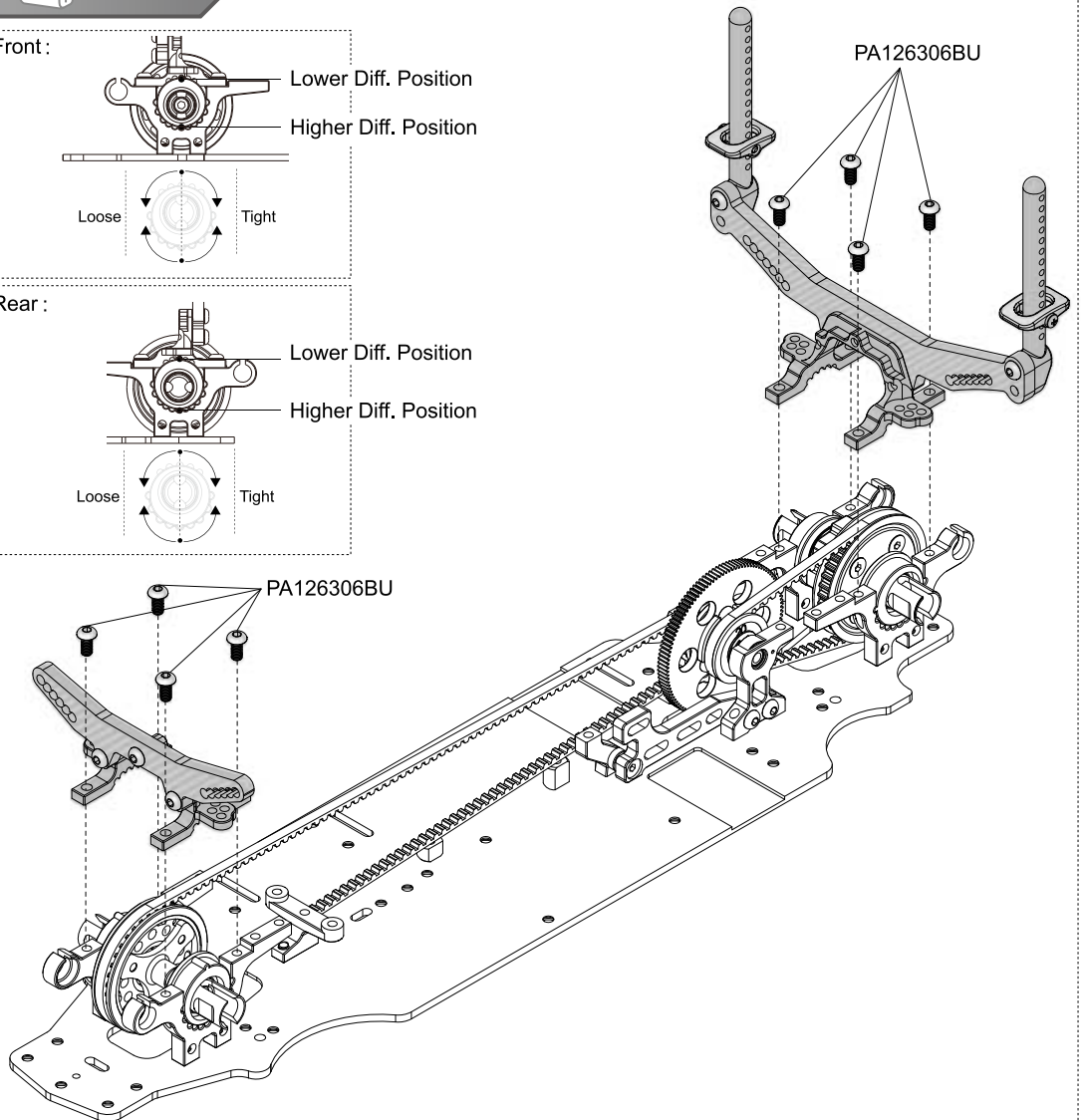


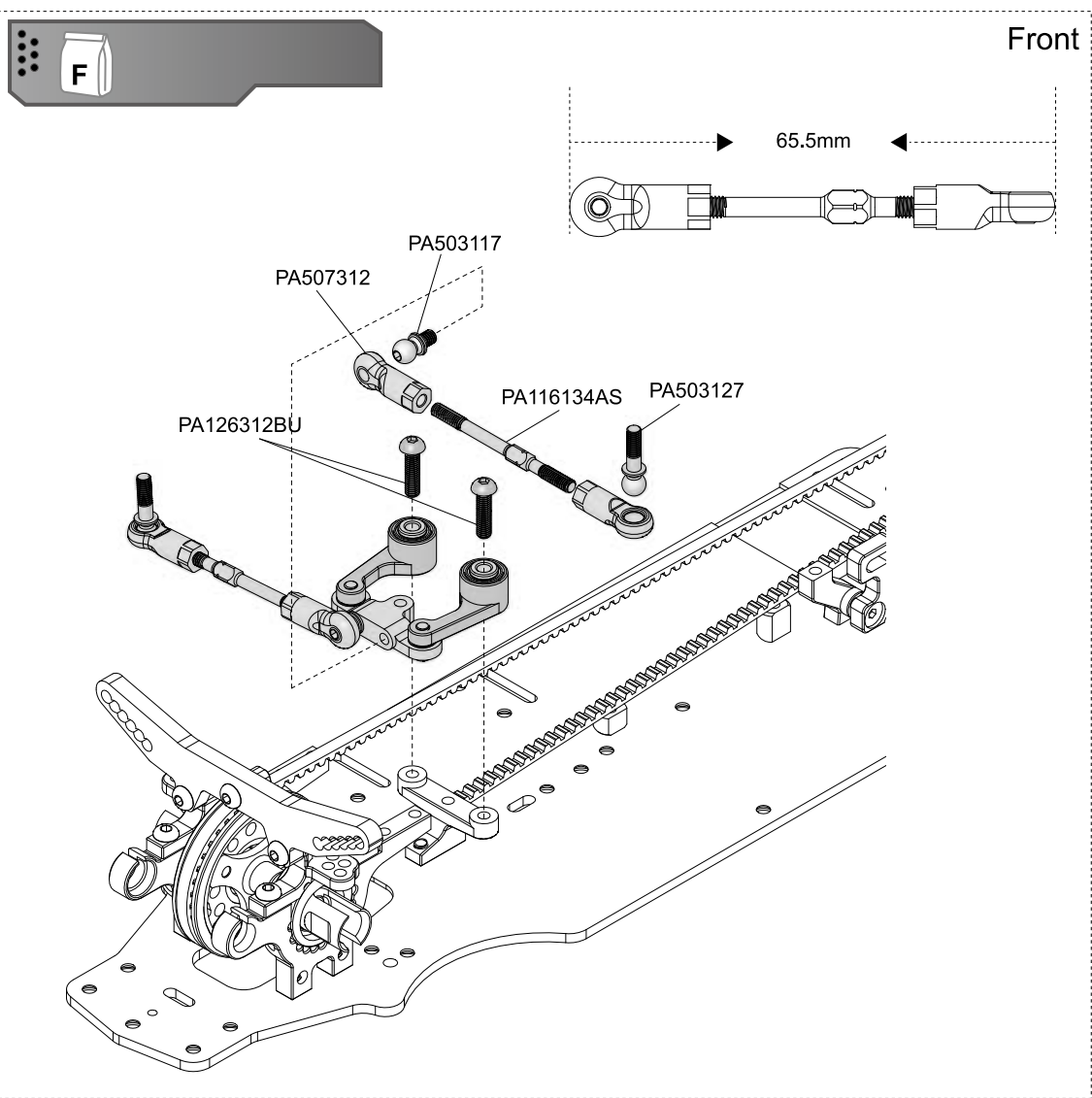
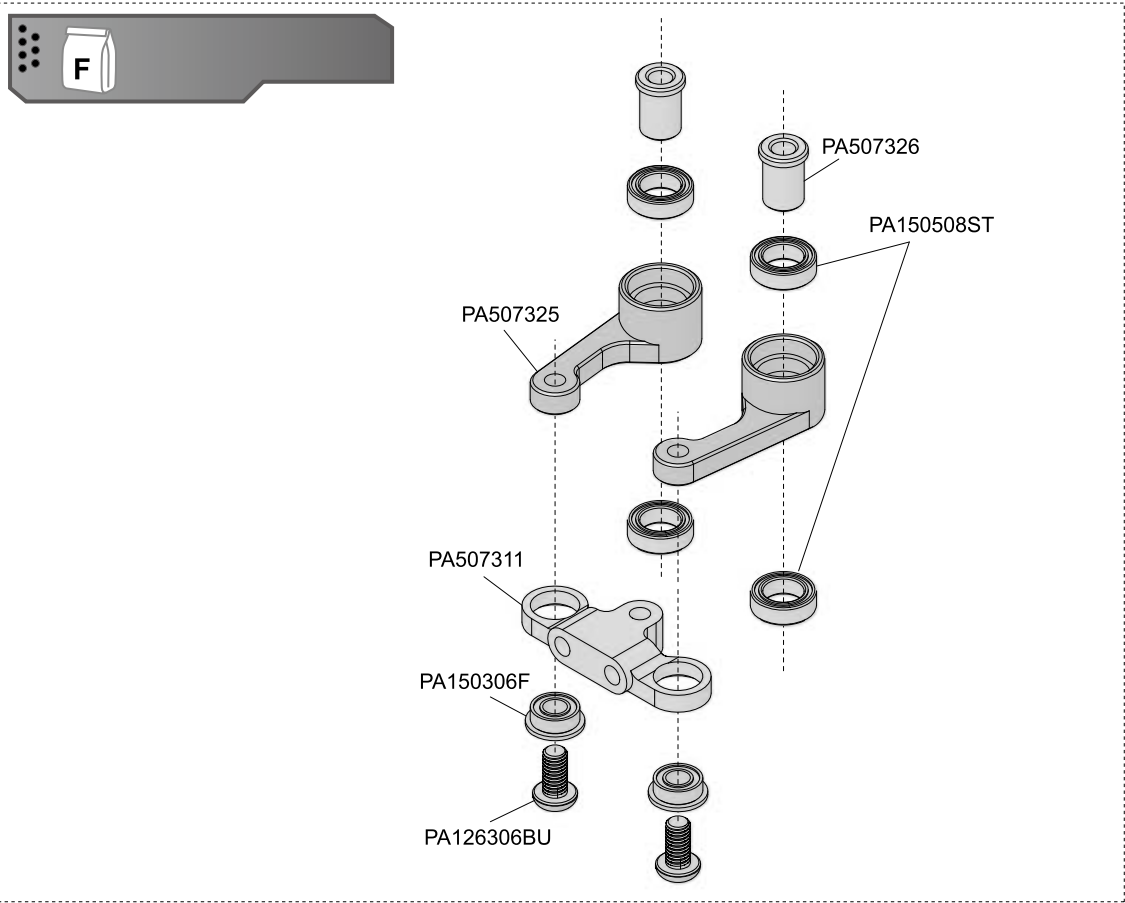
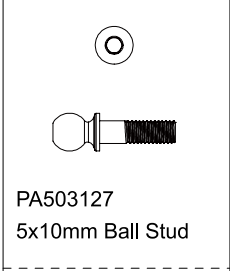
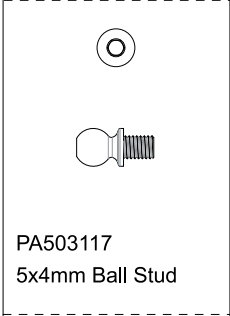
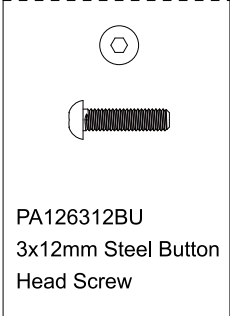
Rear:





PA126306BU

PA126306BU





  
  
 PA126204BU  
 2x4mm Steel Button  
 Head Screw

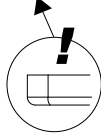
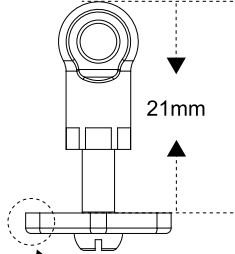
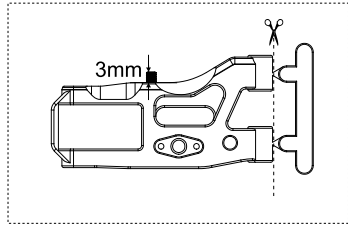
  
  
 PA126307  
 3x7mm Steel FH  
 Screw

  
  
 PA126308S  
 M3X8mm Set

  
  
 PA126405S  
 M4x5mm Set Screw

  
  
 PA130114  
 3X6X1mm Washer

  
  
 PA130136  
 3x5x0.75mm Alum.  
 Washer



PA507313

PA507127H

PA126308S

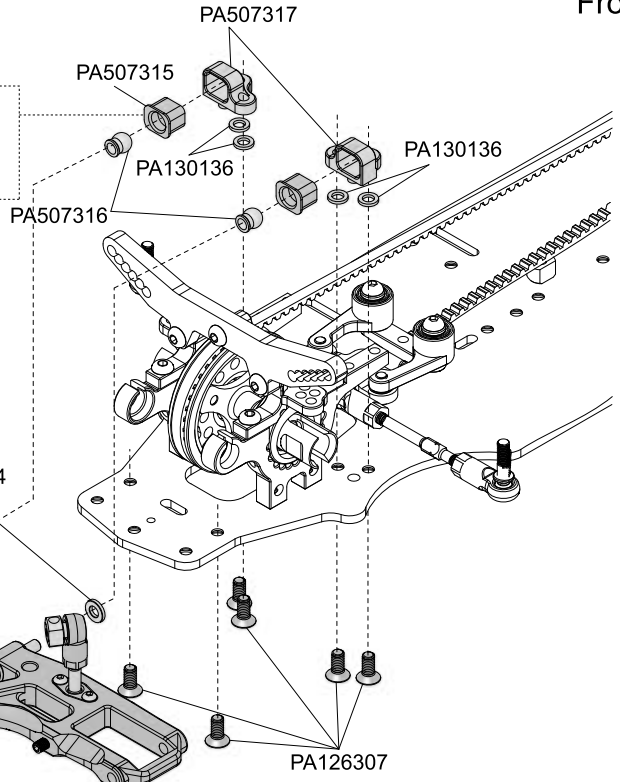
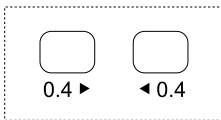
PA503123

PA503121

PA126204BU

PA507130

PA126405S



PA507317

PA507315

PA130136

PA507316

PA130114

PA130114

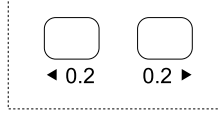
PA507316

PA507315

PA507314

PA126307



PA130136





Rear



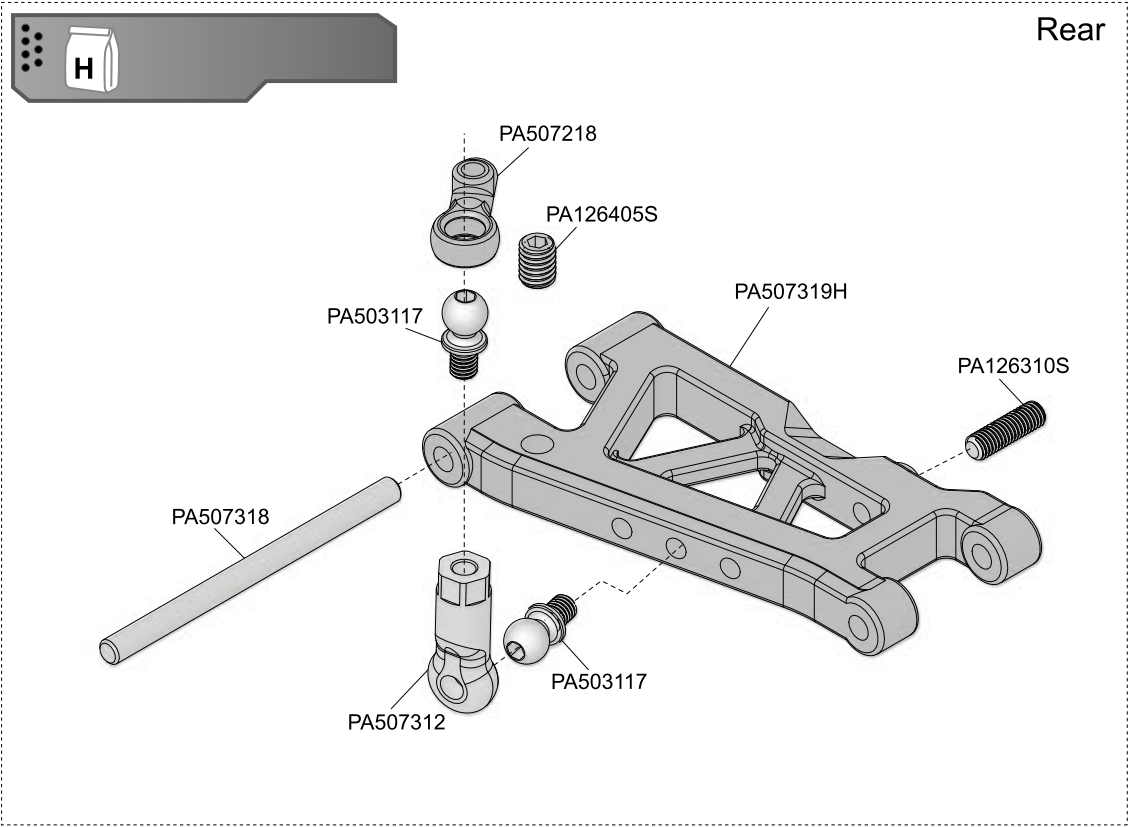

PA126307  
3x7mm Steel FH  
Screw



PA126310S  
M3X10mm Set



PA126405S  
M4x5mm Set Screw



Rear

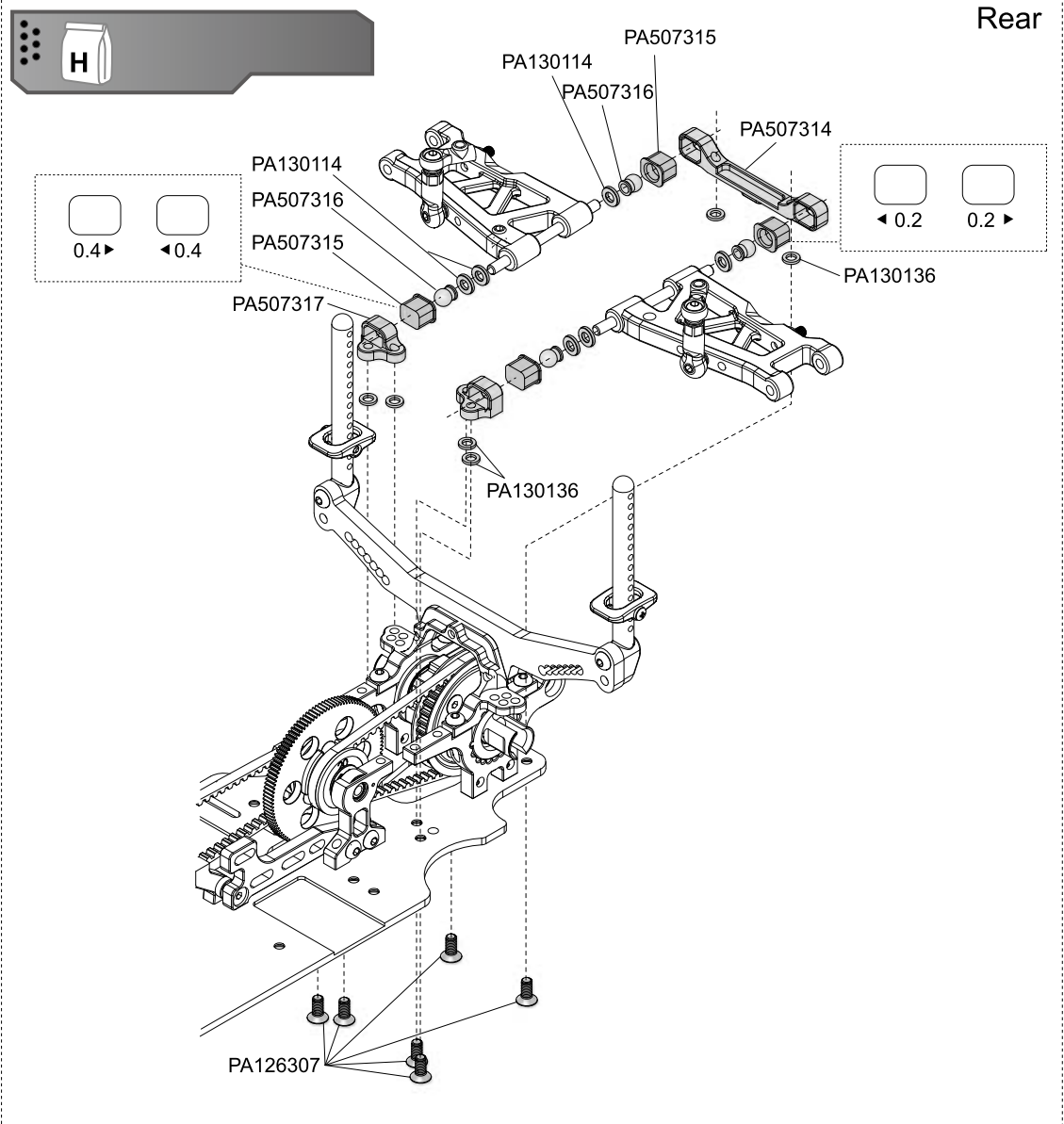
PA130114  
3X6X1mm Washer



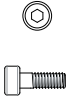

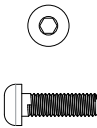

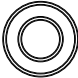
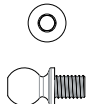
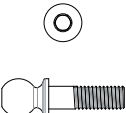
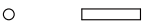

PA130136  
3x5x0.75mm Alum.  
Washer

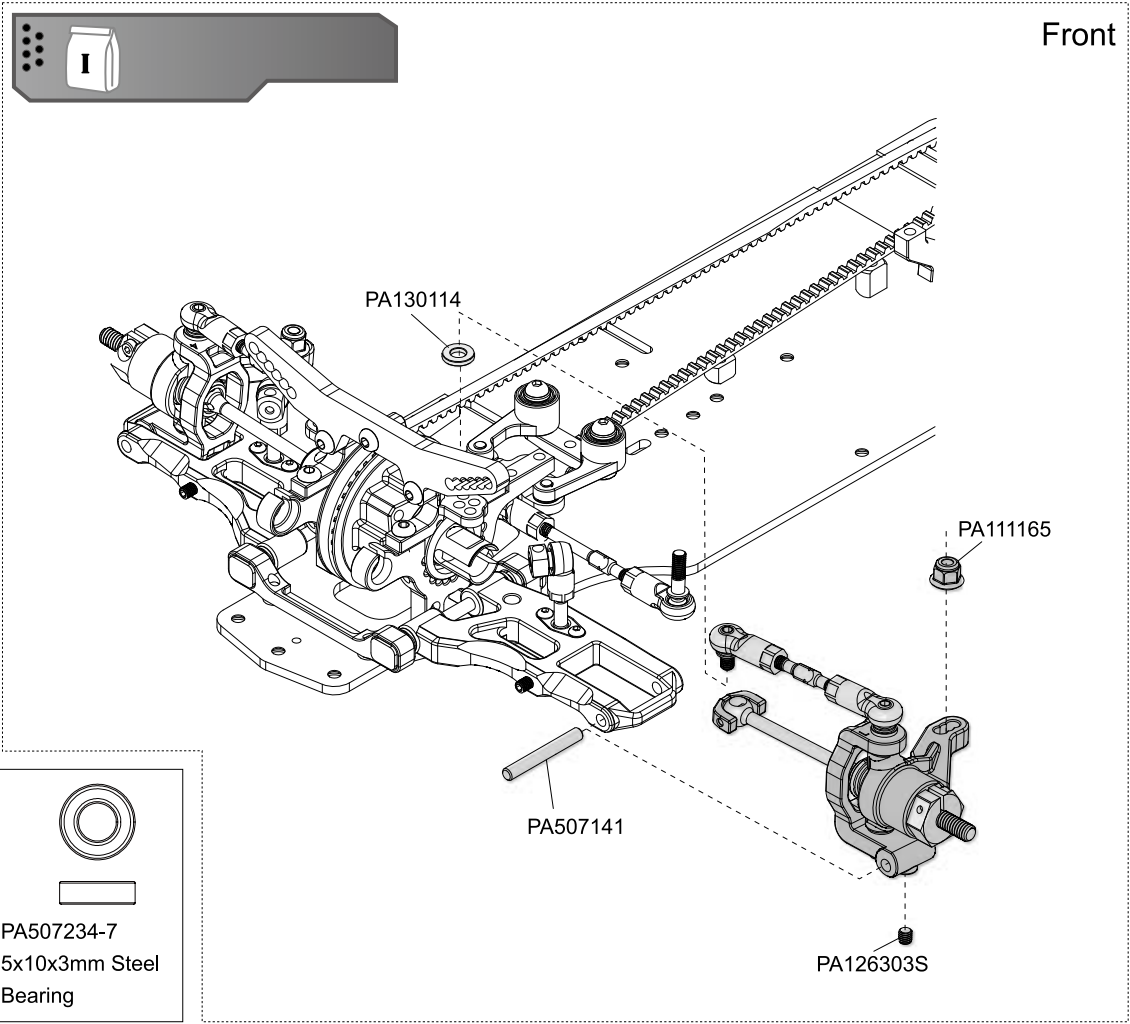
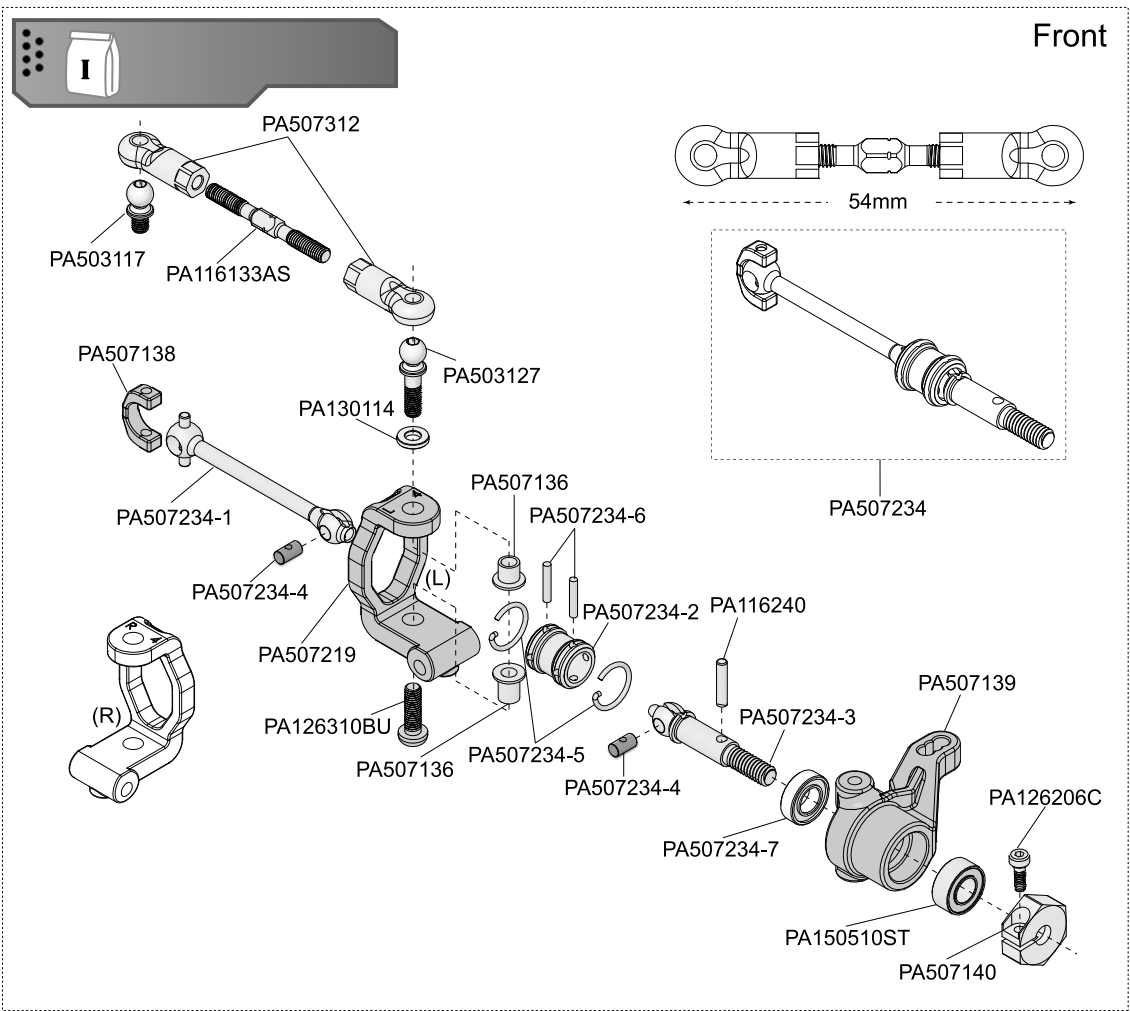



PA503117  
5x4mm Ball Stud




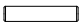











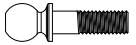




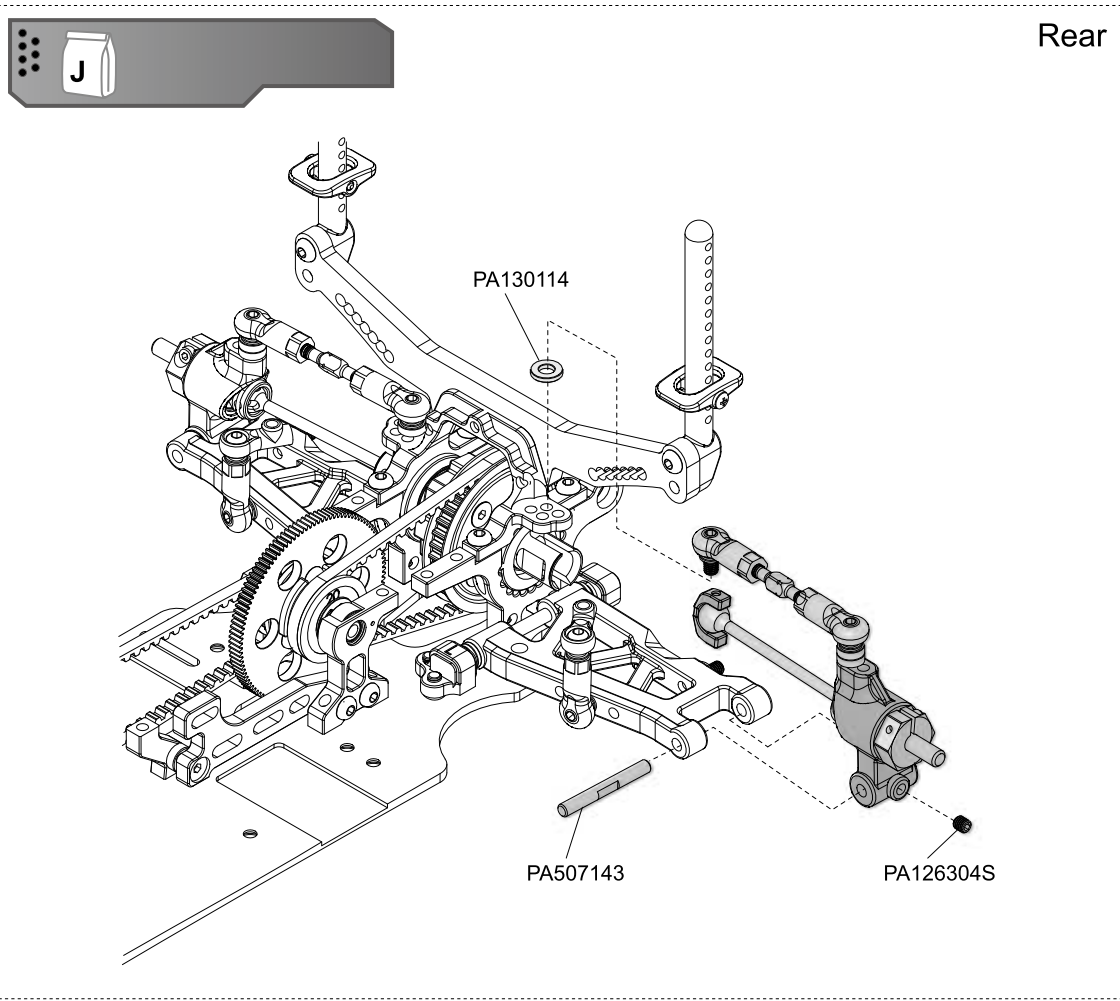
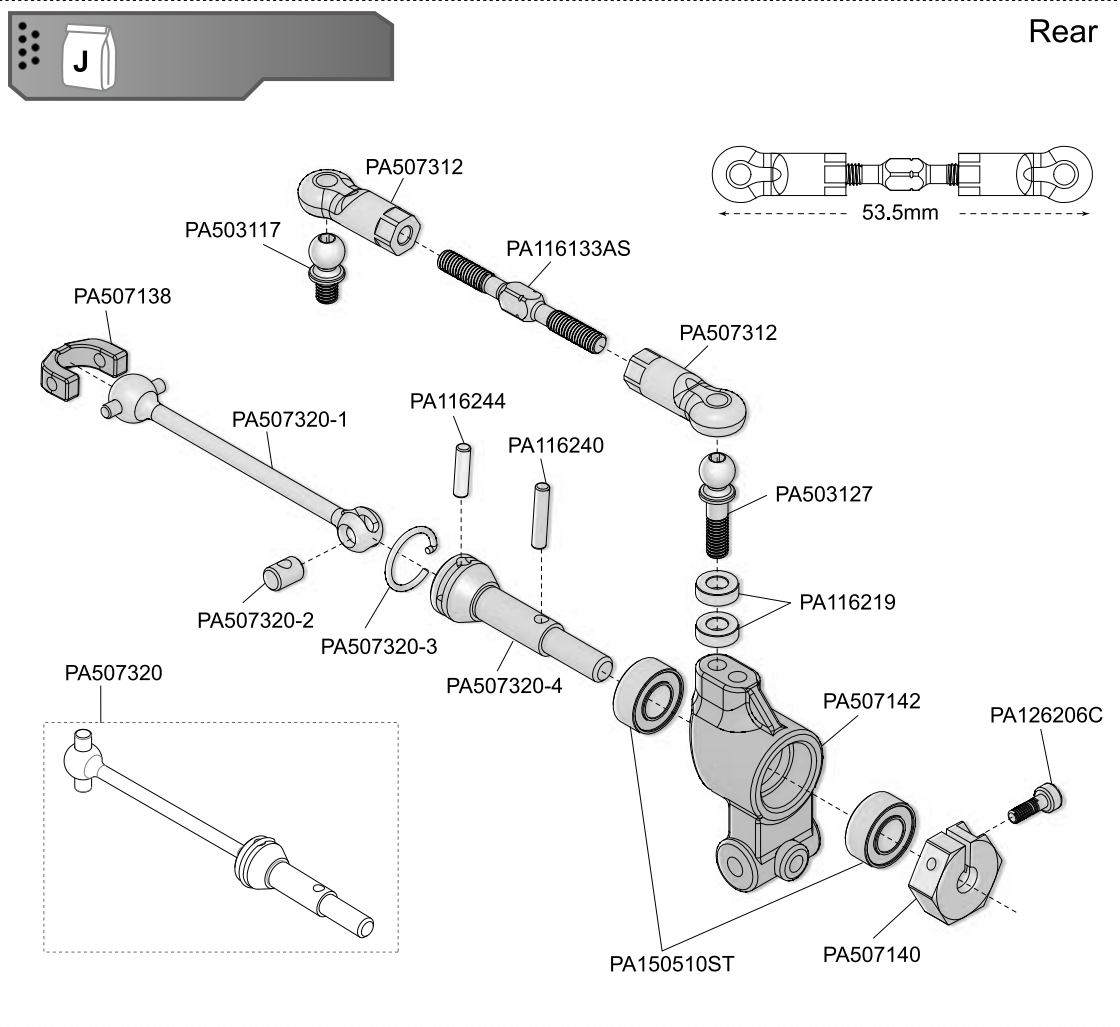


-   
PA111165  
3mm Flanged Nut
-   
PA116240  
2x9.8mm Pin
-   
PA126206C  
2x6mm Cap Screw
-   
PA126303S  
3x3mm Set Screw
-   
PA126310BU  
3x10mm Button Head Screw
-   
PA130114  
3X6X1mm Washer
-   
PA150510ST  
5x10x4mm Steel Bearing
-   
PA503117  
5x4mm Ball Stud
-   
PA503127  
Steering Block  
5x10mm Ball Stud
-   
PA507234-6  
1.5x8.5mm Pin
-   
PA507234-7  
5x10x3mm Steel Bearing

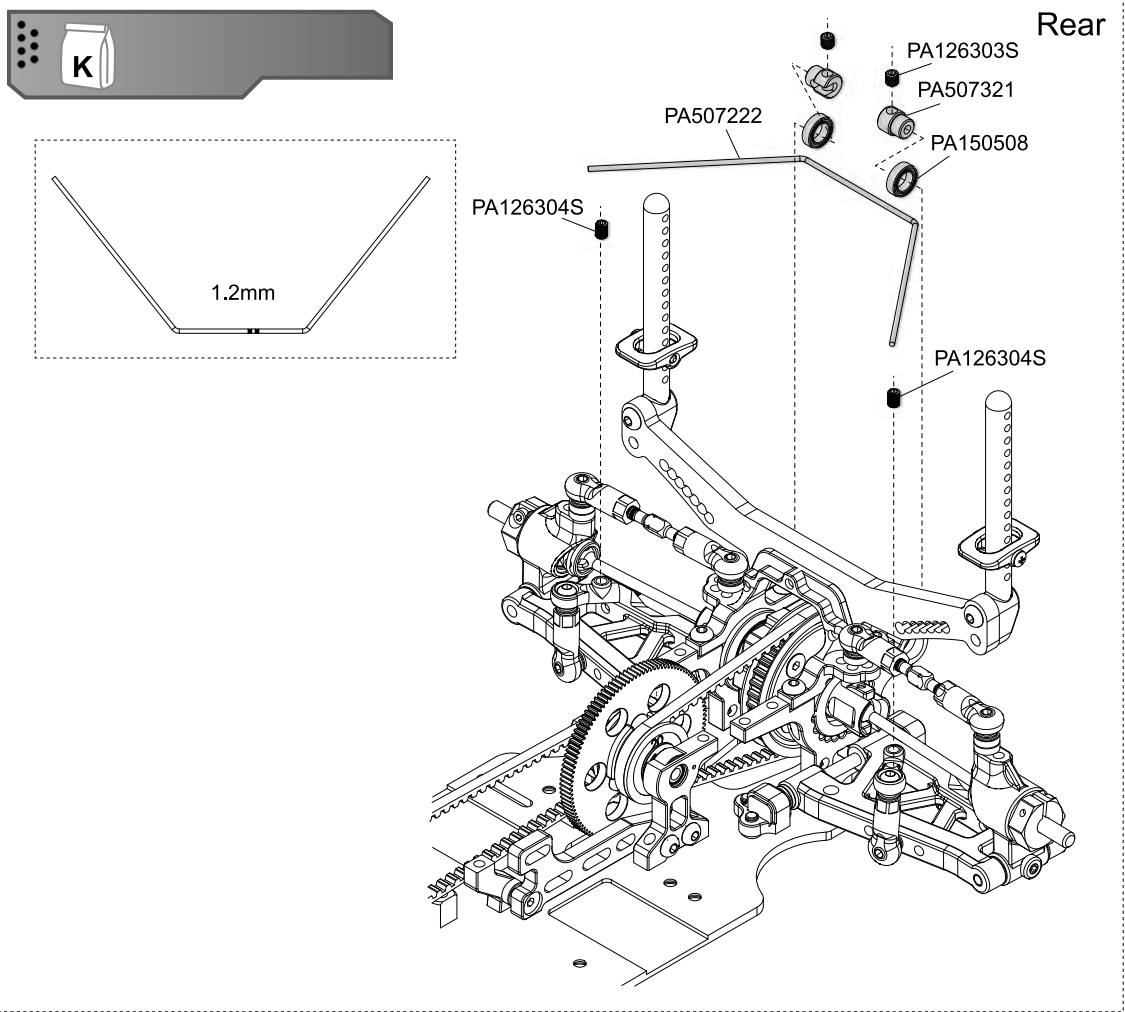
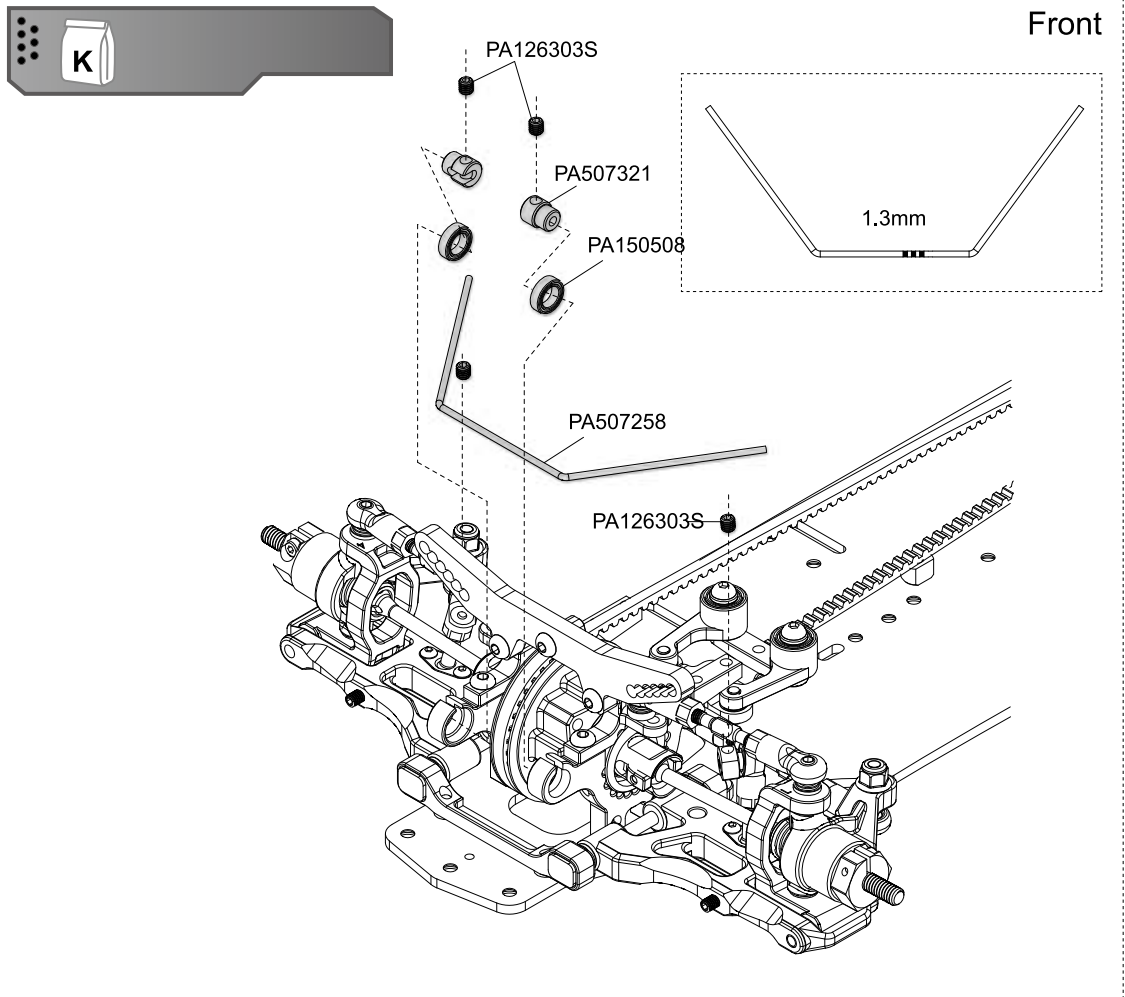




 	PA116219 3x6x2mm Alum. Washer
 	PA116240 2x9.8mm Pin
 	PA126206C 2x6mm Cap Screw
 	PA126304S 3x4mm Set Screw
 	PA130114 3X6X1mm Washer
 	PA150510ST 5x10x4mm Steel Bearing
 	PA503117 5x4mm Ball Stud
 	PA503127 Steering Block 5x10mm Ball Stud
 	PA116244 2x7.8mm Pin



- 
  - 
  - 
  - 
  - 
  - 
- PA126303S  
3x3mm Set Screw
- 
- PA126304S  
3x4mm Set Screw
- 
- PA150508  
5x8x2.5mm Bearing





PA116219  
3x6x2mm Alum.  
Washer



PA126306  
3x6mm Steel FH  
Screw



PA126306BU  
3x6mm Steel Button  
Head Screw



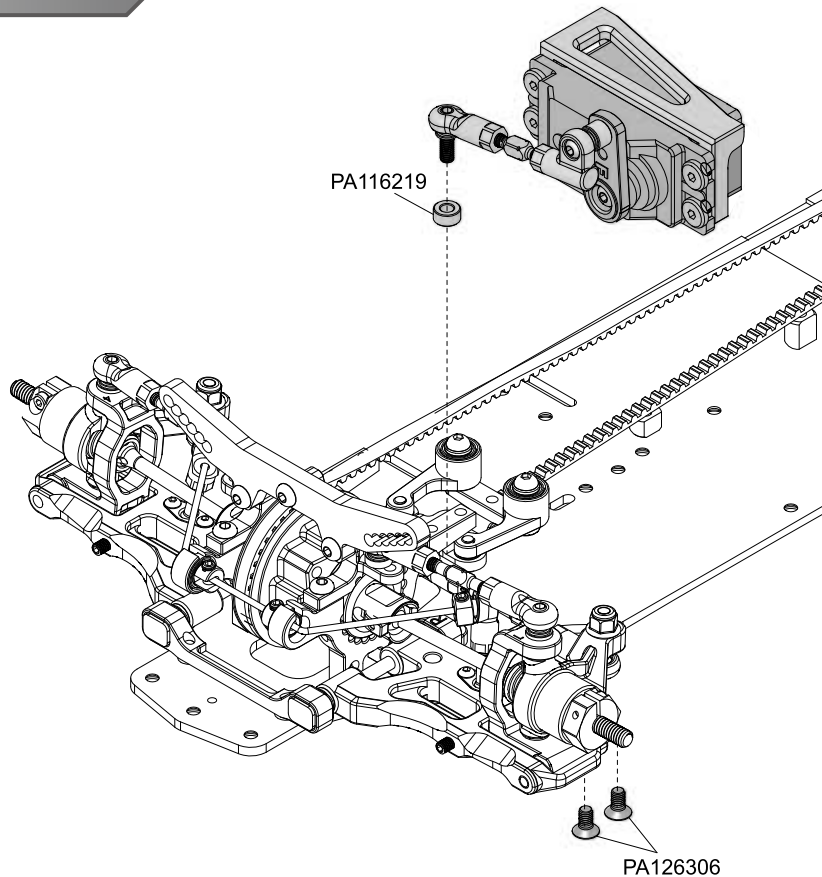
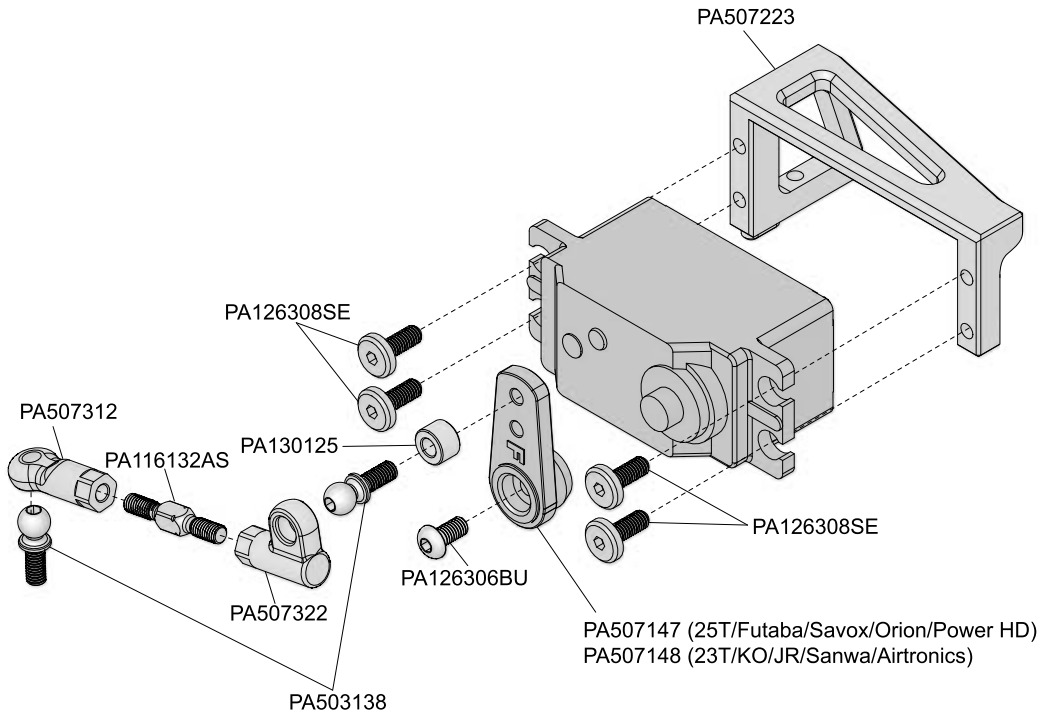
PA126308SE  
3x8mm Steel Flat  
Round Servo Mount  
Screw



PA130125  
3x6x4mm Alum.  
Washer



PA503138BK  
5x7mm Ball Stud





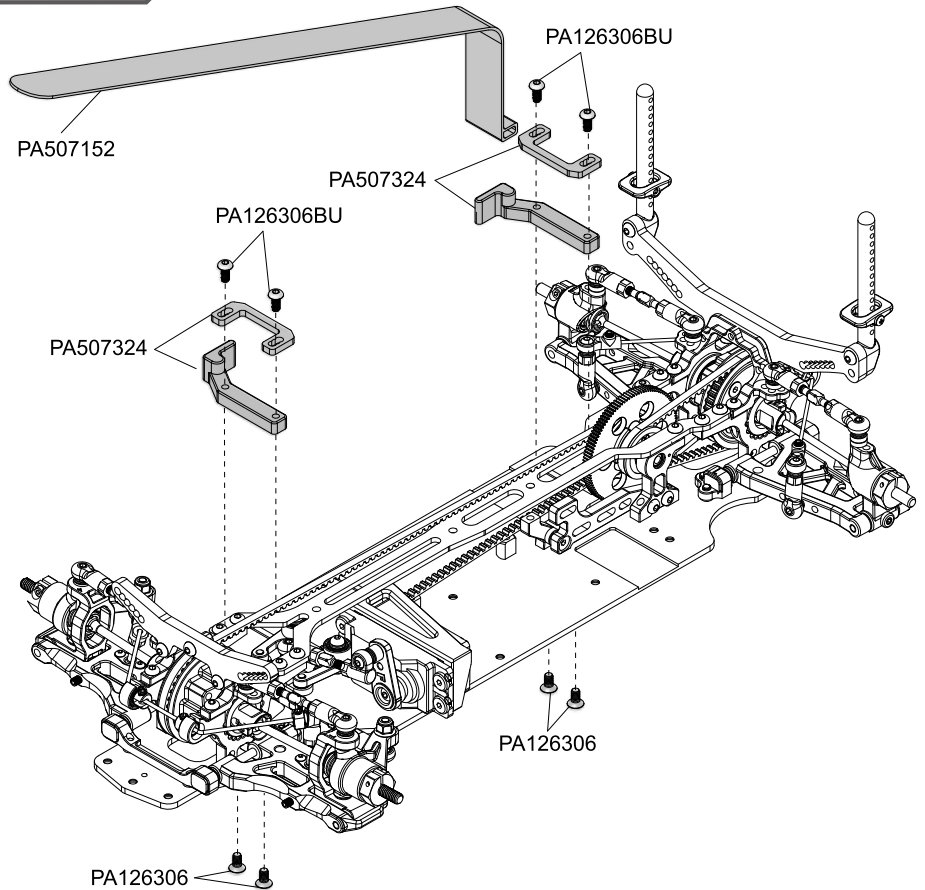
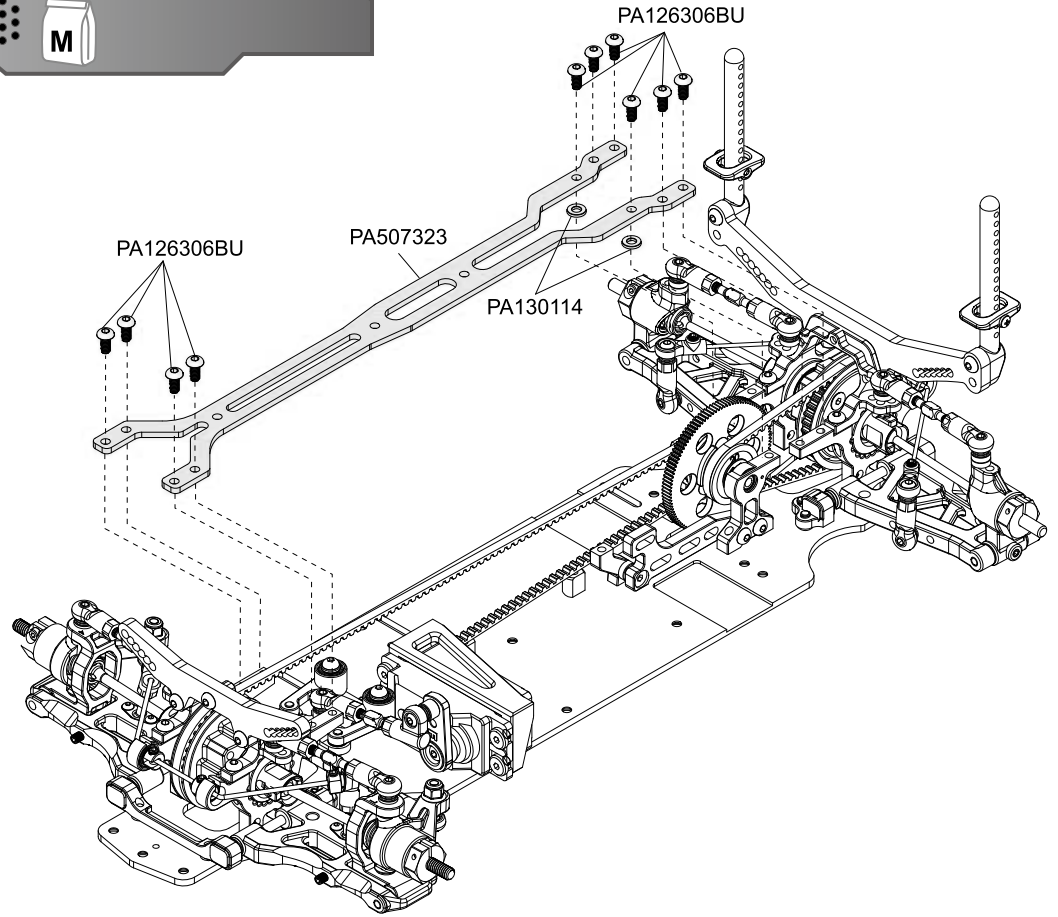
PA126306  
3x6mm Steel FH  
Screw



PA126306BU  
3x6mm Steel Button  
Head Screw



PA130114  
3X6X1mm Washer







PA116219  
3x6x2mm Alum.  
Washer



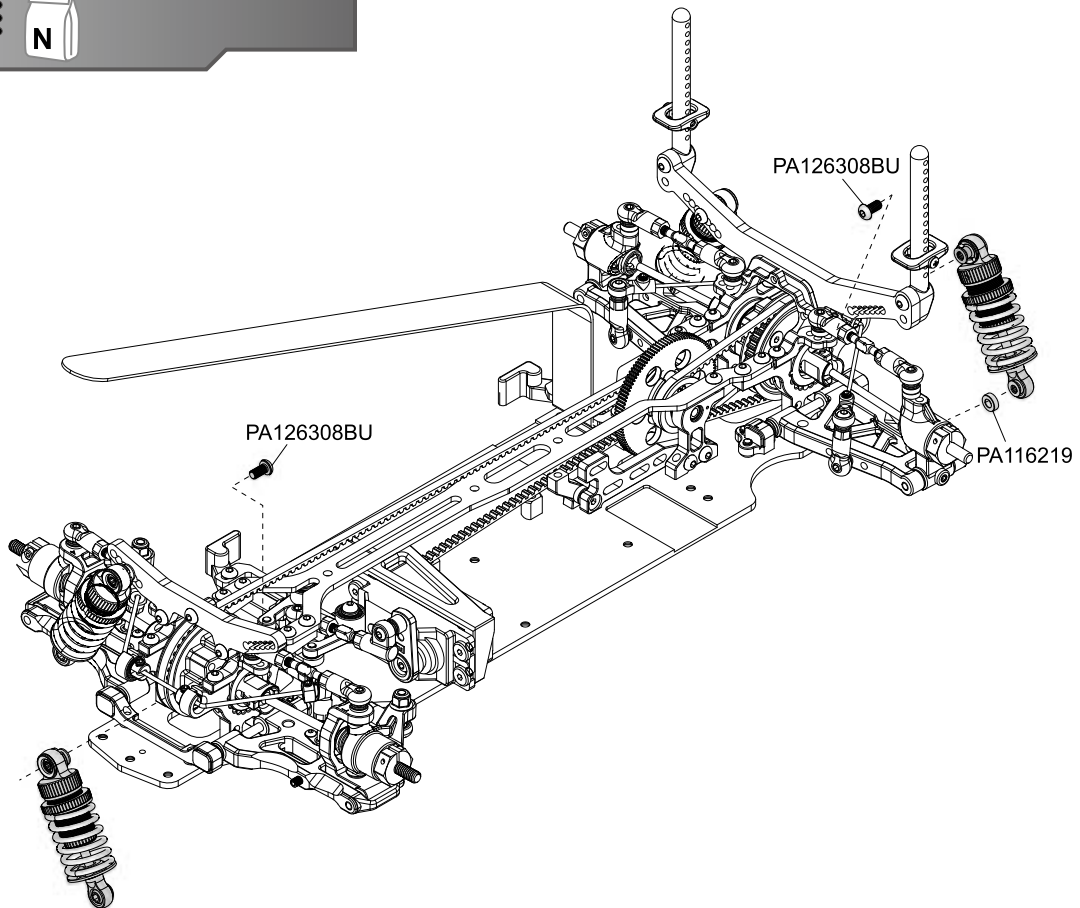
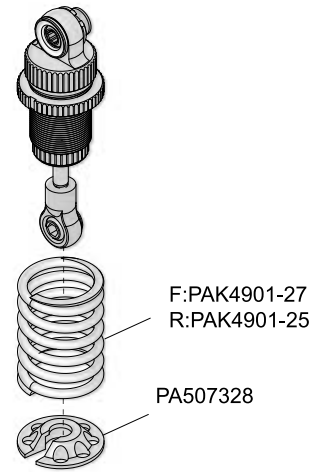
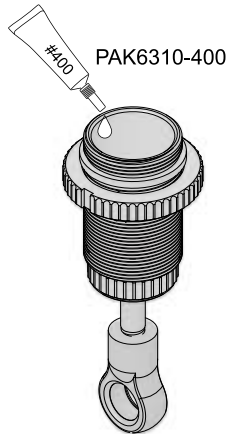
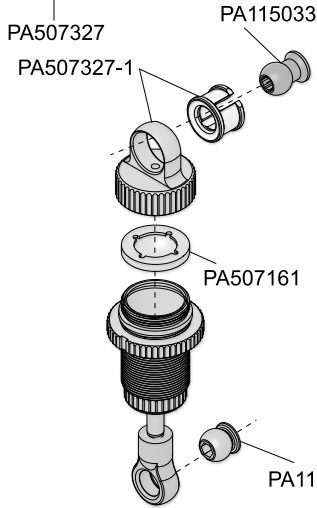
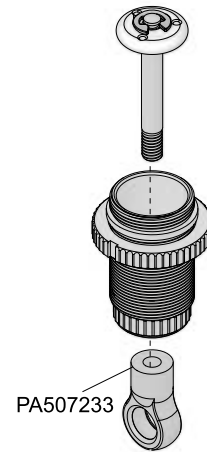
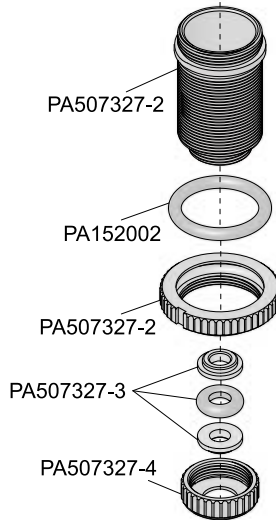
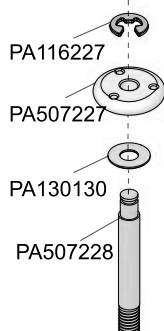
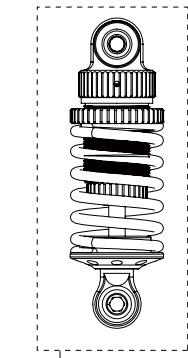
PA116227  
E-clip 2.0



PA126308BU  
3x8mm Steel Button  
Head Screw

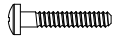


PA130130  
2.6X6X0.3mm  
Washer





PA111007ST  
3mm Steel Locknut



PA126212BU  
2X12mm BH Screw



PA126306  
3x6mm Steel FH  
Screw



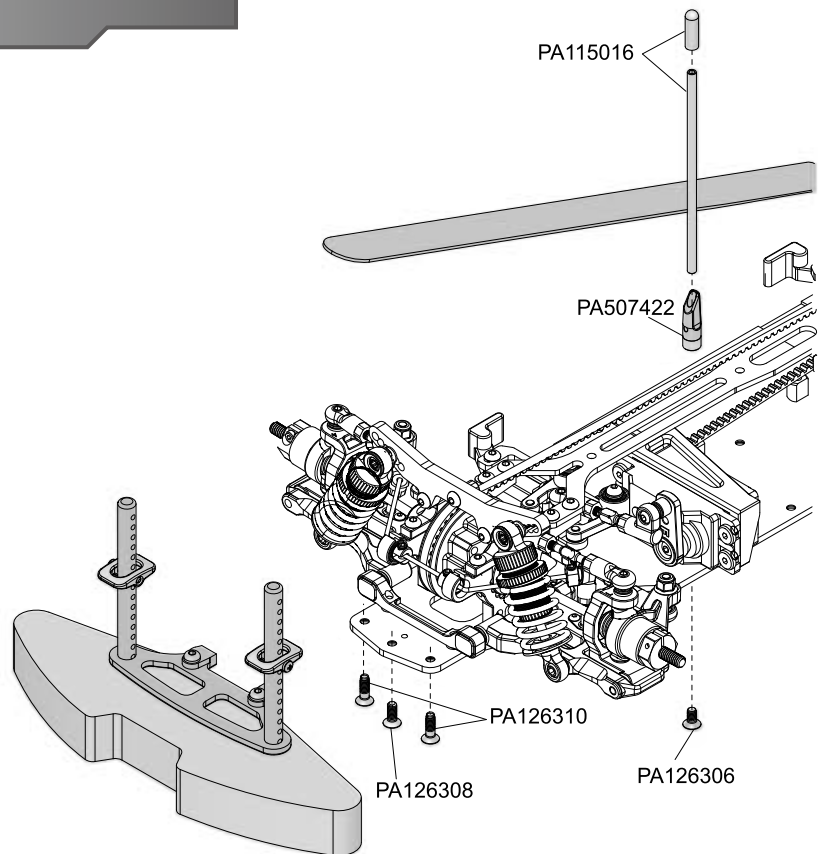
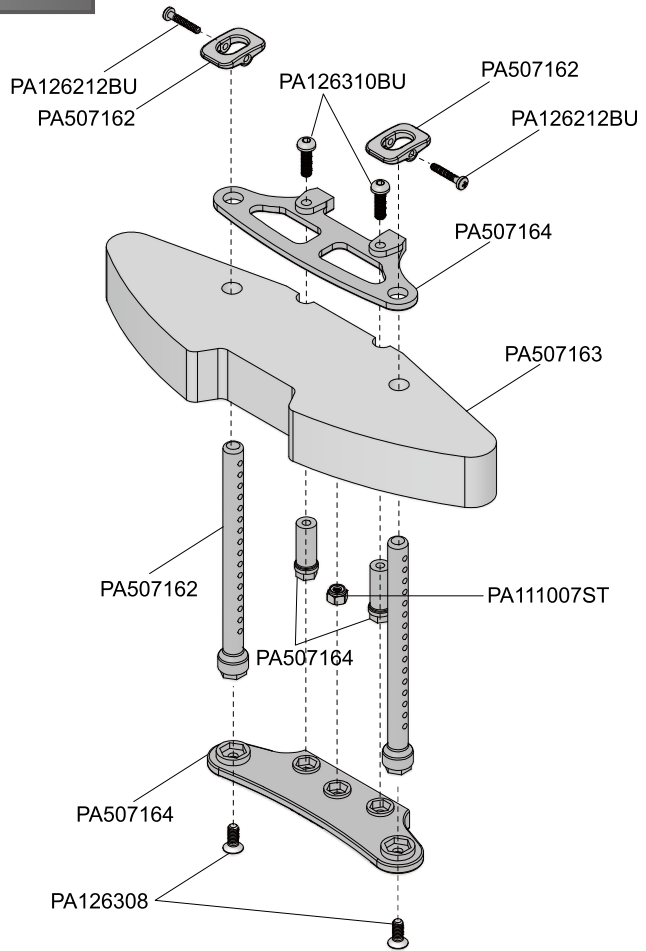
PA126308  
3x8mm Steel F.H.  
Screw



PA126310  
3x10mm Steel FH  
Screw



PA126310BU  
3x10mm Button Head  
Screw



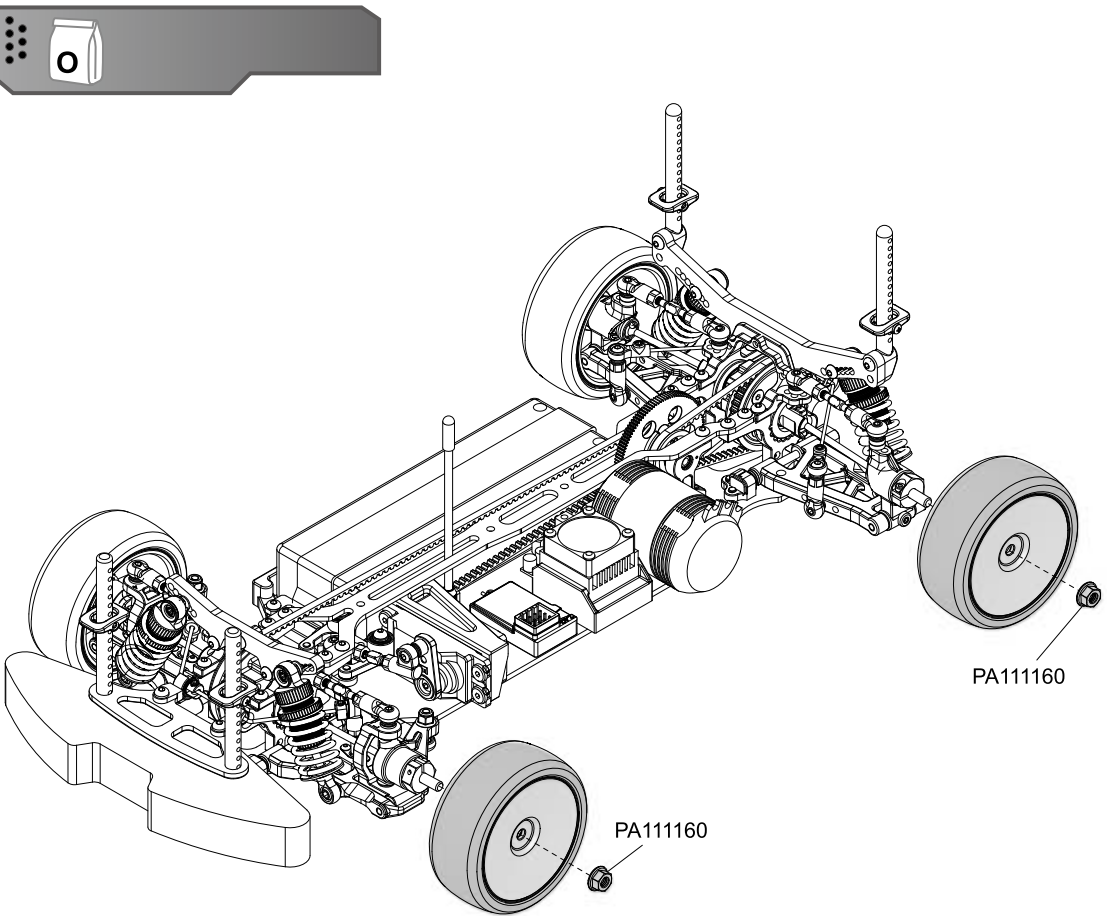
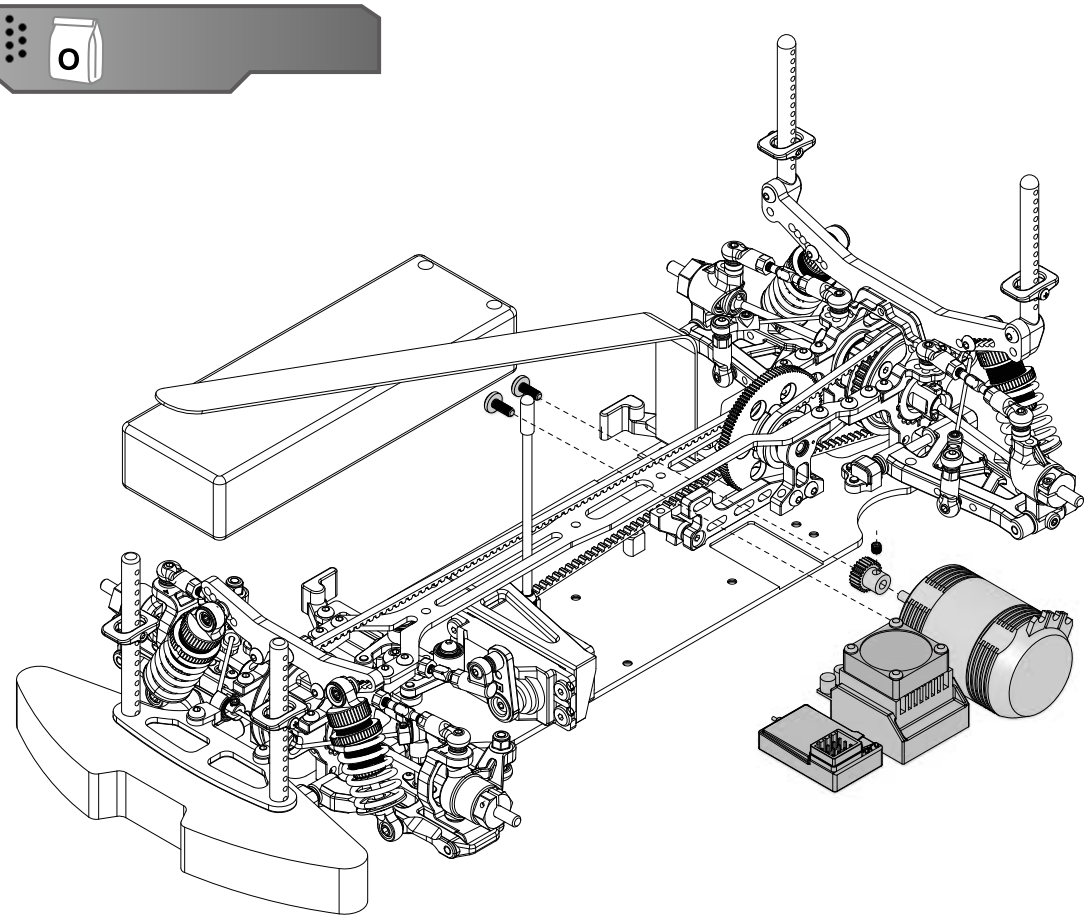




PA111160  
4mm Special Wheel  
Lock Nut-Black



PA126308SE  
3x8mm Steel Flat  
Head Screw



PA111160

PA111160



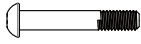
PA126314  
3x14mm Steel Button  
Head Screw



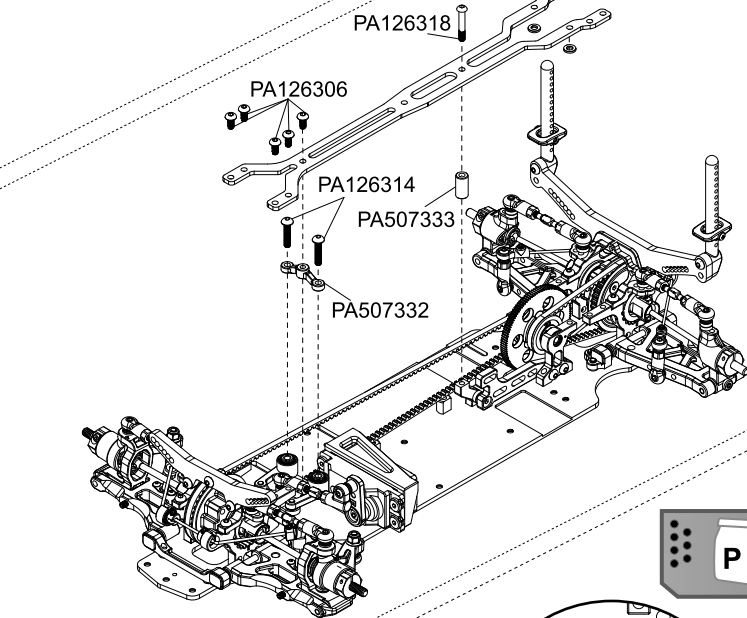
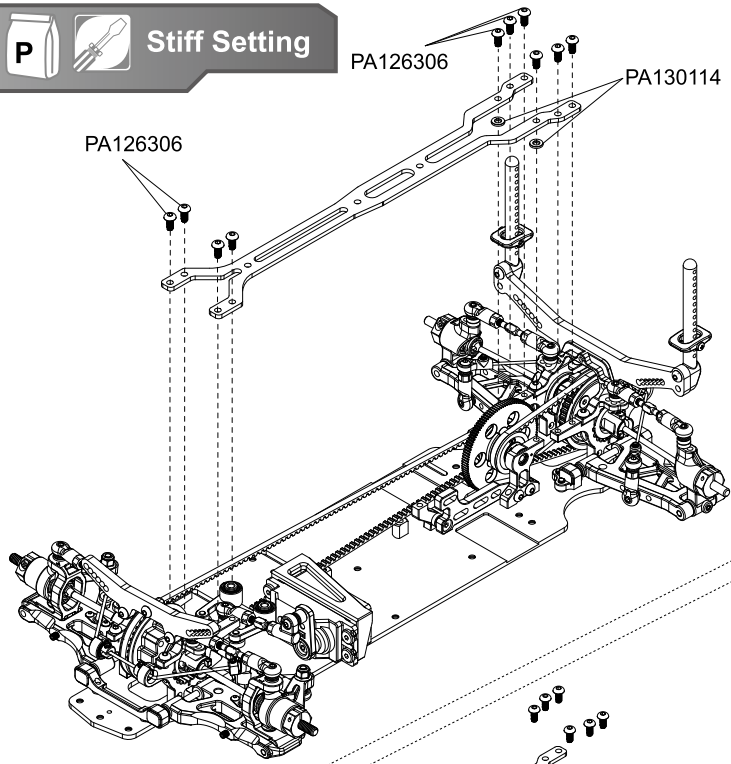
PA126306  
3x6mm Steel FH  
Screw



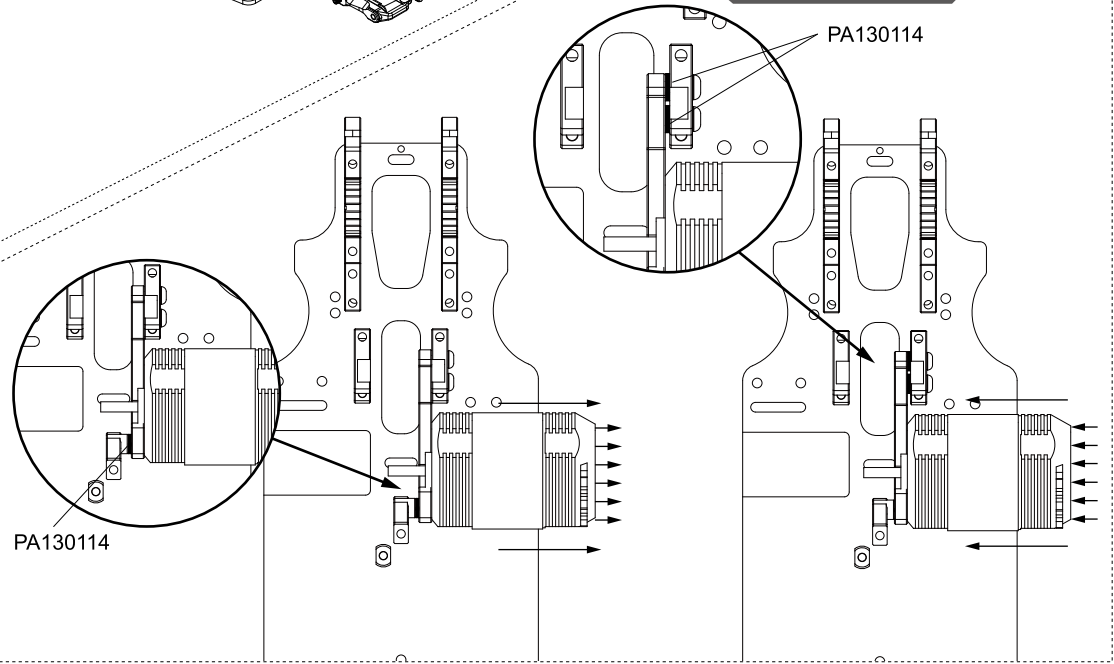
PA126318  
3x18mm Steel Button  
Head Screw



**Stiff Setting**



**Motor Position Setting**



## SETUP SHEET

### TRACK CONDITIONS

Type :	<input type="checkbox"/> Carpet	<input type="checkbox"/> Asphalt	Size:	<input type="checkbox"/> Open	<input type="checkbox"/> Med.	<input type="checkbox"/> Tight
Place :	<input type="checkbox"/> Indoor	<input type="checkbox"/> Outdoor	Traction:	<input type="checkbox"/> High	<input type="checkbox"/> Med.	<input type="checkbox"/> Low
Surface:	<input type="checkbox"/> Smooth	<input type="checkbox"/> Med.	<input type="checkbox"/> Bumpy	Track Temp/Air Temp: _____ / _____		
Note: _____						

### FRONT SUSPENSION

Track Width: \_\_\_\_\_ mm  Gear Diff \_\_\_\_\_ wt

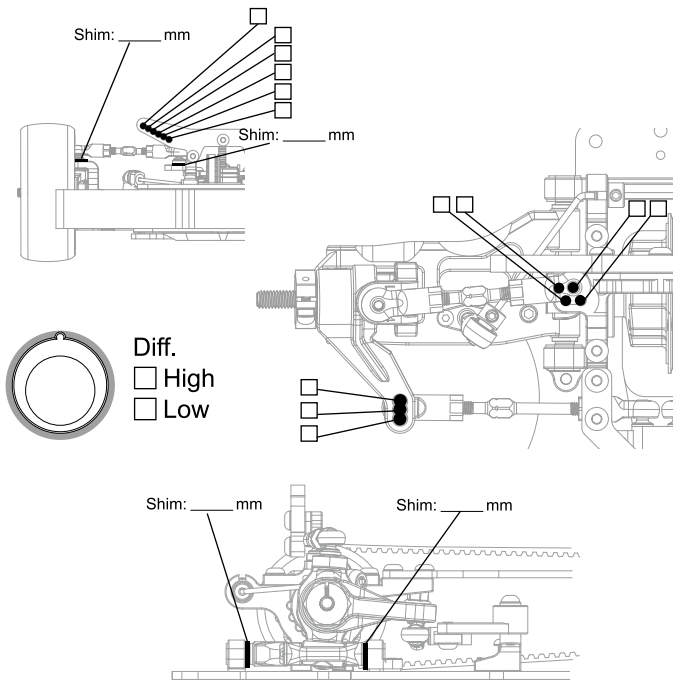
Toe Angle: \_\_\_\_\_  Ball Diff

Caster: \_\_\_\_\_  One Way

Camber: \_\_\_\_\_  Spool

Ride Height: \_\_\_\_\_ mm Anti-Roll Bar:  $\varnothing$  \_\_\_\_\_ mm

Down Stop: \_\_\_\_\_ mm



### REAR SUSPENSION

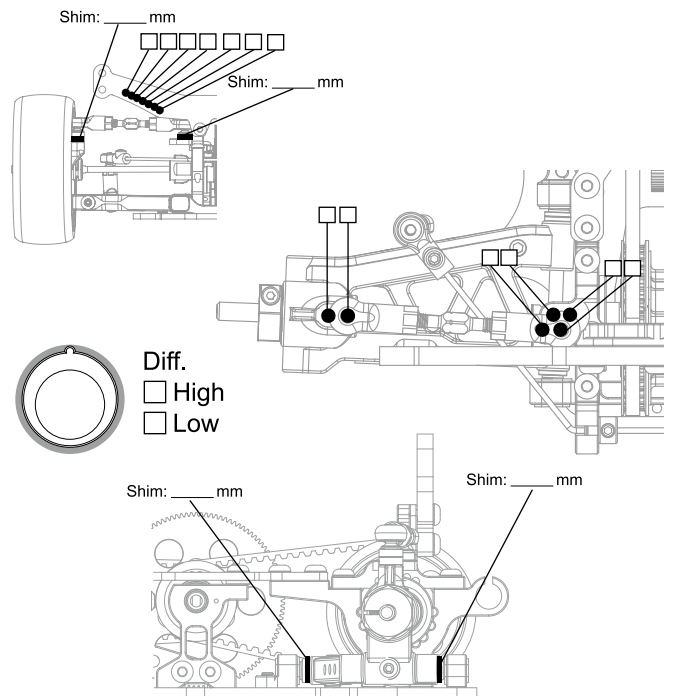
Track Width: \_\_\_\_\_ mm  Gear Diff \_\_\_\_\_ wt

Toe Angle: \_\_\_\_\_  Ball Diff

Camber: \_\_\_\_\_  Spool

Ride Height: \_\_\_\_\_ mm

Down Stop: \_\_\_\_\_ mm Anti-Roll Bar:  $\varnothing$  \_\_\_\_\_ mm



### ARM HOLDERS

(+)  $\blacktriangleleft$   $\blacktriangleright$  (-) (-)  $\blacktriangleleft$   $\blacktriangleright$  (+)

FFL	FFR
FRL	FRR
<input type="checkbox"/>	<input type="checkbox"/>

(+)  $\blacktriangleleft$   $\blacktriangleright$  (-) (-)  $\blacktriangleleft$   $\blacktriangleright$  (+)

RFL	RFR
RRL	RRR
<input type="checkbox"/>	<input type="checkbox"/>

### ELECTRONICS

Servo: \_\_\_\_\_

ESC: \_\_\_\_\_

Battery: \_\_\_\_\_

### DRIVE RATIO

$$\frac{\text{Spur}}{\text{Pinion}} \times 1.9 = \frac{T}{T}$$

### MOTOR

Brand: \_\_\_\_\_

Turns: \_\_\_\_\_

Timing: \_\_\_\_\_

### TIRES

Insert: \_\_\_\_\_

Wheel: \_\_\_\_\_

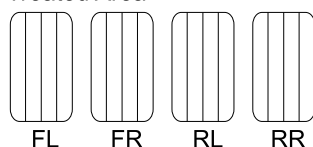
Shore/deg: \_\_\_\_\_

Compound: \_\_\_\_\_

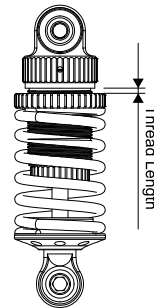
Tire Temp: \_\_\_\_\_

Tire additive: \_\_\_\_\_

Treated Area



### SHOCKS



Hole Size: F \_\_\_\_\_ R \_\_\_\_\_

Holes In Piston: F \_\_\_\_\_ R \_\_\_\_\_

Oil wt: F \_\_\_\_\_ R \_\_\_\_\_

Springs: F \_\_\_\_\_ R \_\_\_\_\_

Rebound: F \_\_\_\_\_ R \_\_\_\_\_

Bladder Note: \_\_\_\_\_

Thread Length: F \_\_\_\_\_ R \_\_\_\_\_

### ESC

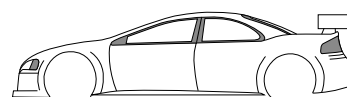
Punch: \_\_\_\_\_

Initial Brake: \_\_\_\_\_

Drag Brake: \_\_\_\_\_

ESC Timing  Turbo Timing

### BODY



Body: \_\_\_\_\_

Wing Height: \_\_\_\_\_

Wing Position: \_\_\_\_\_

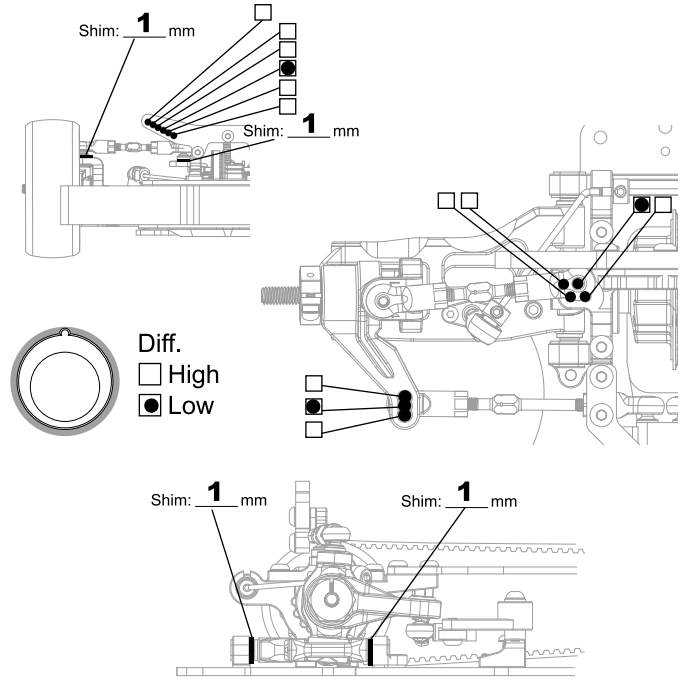
## SETUP SHEET

### TRACK CONDITIONS

Type :  Carpet  Asphalt  
 Place :  Indoor  Outdoor  
 Surface:  Smooth  Med.  Bumpy  
 Size:  Open  Med.  Tight  
 Traction:  High  Med.  Low  
 Track Temp/Air Temp: \_\_\_\_\_ / \_\_\_\_\_  
 Note: \_\_\_\_\_

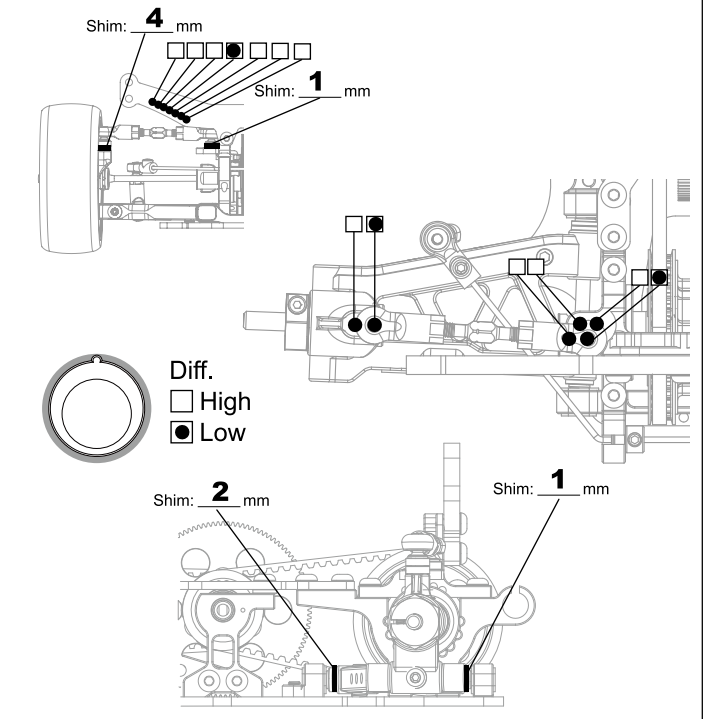
### FRONT SUSPENSION

Track Width: **186** mm  Gear Diff \_\_\_\_\_ wt  
 Toe Angle: **+1** °  Ball Diff  
 Caster: **4** °  One Way  
 Camber: **-2** °  Spool  
 Ride Height: **5** mm Anti-Roll Bar:  $\varnothing$  **1.3** mm  
 Down Stop: **6** mm



### REAR SUSPENSION

Track Width: **189** mm  Gear Diff **1000** wt  
 Toe Angle: **-3** °  Ball Diff  
 Camber: **-1.5** °  Spool  
 Ride Height: **5.5** mm  
 Down Stop: **5** mm Anti-Roll Bar:  $\varnothing$  **1.2** mm



### ARM HOLDERS

(+)  $\blacktriangleleft$   $\blacktriangleright$  (-) (-)  $\blacktriangleleft$   $\blacktriangleright$  (+)

**0.2** **0.4** **0.4**

**0.2** **0.4** **0.4**

(+)  $\blacktriangleleft$   $\blacktriangleright$  (-) (-)  $\blacktriangleleft$   $\blacktriangleright$  (+)

**0.2** **0.4** **0.4**

**0.2** **0.4** **0.2**

### ELECTRONICS

Servo: \_\_\_\_\_  
 ESC: \_\_\_\_\_  
 Battery: \_\_\_\_\_

### DRIVE RATIO

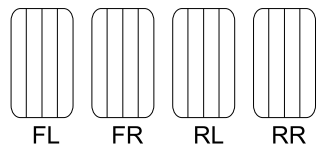
Spur **110**  $\frac{T}{T} \times 1.9 =$   
 Pinion \_\_\_\_\_

### MOTOR

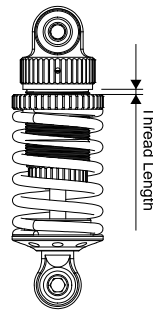
Brand: \_\_\_\_\_  
 Turns: \_\_\_\_\_  
 Timing: \_\_\_\_\_

### TIRES

Insert : \_\_\_\_\_  
 Wheel: \_\_\_\_\_  
 Shore/deg: \_\_\_\_\_  
 Compound: \_\_\_\_\_  
 Tire Temp: \_\_\_\_\_  
 Tire additive: \_\_\_\_\_  
 Treated Area



### SHOCKS

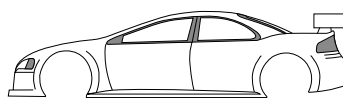


Hole Size: F **1.1** R **1.1**  
 Holes In Piston: F **3** R **3**  
 Oil wt: F **400** R **400**  
 Springs: F **K-factory 27** R **K-factory 25**  
 Rebound: F \_\_\_\_\_ R \_\_\_\_\_  
 Bladder Note: \_\_\_\_\_  
 Thread Length: F \_\_\_\_\_ R \_\_\_\_\_

### ESC

Punch: \_\_\_\_\_  
 Initial Brake: \_\_\_\_\_  
 Drag Brake: \_\_\_\_\_  
 ESC Timing  Turbo Timing

### BODY



Body: \_\_\_\_\_  
 Wing Height: \_\_\_\_\_  
 Wing Position: \_\_\_\_\_

**PARTS**

Item No.	Item Description
PA111007ST	3mm Steel Locknut (10)
PA1111160	4mm Special Wheel Lock Nut-Black (4)
PA1111165	3mm Flanged Nut(10)
PA115016	Antenna Rod (2) BLACK
PA115033	5.8mm Hex Socket Steel Ball-Long Neck (6)
PA115034	5.8mm Hex Socket Steel Ball-Short Neck (6)
PA116132AS	3x20mm Alum. 7075 Adjustable Rod (2)
PA116133AS	3x30mm Alum. 7075 Adjustable Rod (2)
PA116134AS	3x40mm Alum. 7075 Adjustable Rod (2)
PA116203	E-clip 5 (10)
PA116216	3x6x1mm Alum. Washer (6)
PA116219	3x6x2mm Alum. Washer (6)
PA116226	3.1x4.8x0.5mm Shim (10)
PA116227	E-clip 2.0 (10)
PA116228	2X9.0mm Pin(10)
PA116238	2x12.8mm Pin (10)
PA116240	2x9.8mm Pin (10)
PA116244	2x7.8mm Pin (10)
PA126204BU	2x4mm Steel Button Head Screw (6)
PA126206C	2x6mm Cap Screw (6)
PA126212BU	2X12mm BH Screw(10)
PA126303S	3x3mm Set Screw (6)
PA126304BU	M3X4mm BH Screw(10)
PA126304S	3x4mm Set Screw (6)
PA126305	3x5mm Steel FH Screw (6)
PA126305BU	M3X5mm BH Screw (10)
PA126306	3x6mm Steel FH Screw (6)
PA126306BU	3x6mm Steel Button Head Screw (6)
PA126307	3x7mm Steel FH Screw (6)
PA126308	3x8mm Steel F.H. Screw (6)
PA126308BU	3x8mm Steel Button Head Screw (6)
PA126308S	M3X8mm Set(10)
PA126308SE	3x8mm Steel Flat Round Servo Mount Screw (6)
PA126310	3x10mm Steel F.H. Screw (6)
PA126310BU	3x10mm Button Head Screw (6)
PA126310S	3x10mm Set Screw (6)
PA126312BU	3x12mm Button Head Screw (6)
PA126312C	3x12mm Cap Screw (6)
PA126405S	M4x5mm Set Screw(6)
PA130114	3X6X1mm Washer(10)
PA130125	3x6x4mm Alum. Washer (6)
PA130129	5.2x12x0.2 Washer (10)
PA130130	2.6X6X0.3mm Washer(10)
PA130136	3x5x0.75mm Alum. Washer (6)
PA130137	3.1x8x0.3mm Washer (10)
PA150306F	3x6x2.5mm Flanged Bearing (2)
PA150508	5x8x2.5mm Bearing (2)
PA150508ST	5x8x2.5mm Steel Bearing(4)
PA150510ST	5x10x4mm Steel Bearing (4)
PA151015ST	10x15x4mm Steel Bearing (4)
PA152002	"O-RING 11.2 x 1.7 (10)
PA152005	"O-Ring 4.7X1.4mm(10)
PA503117	5x4mm Ball Stud (6)-Black
PA503121	Short Ball Cup (6)
PA503123	Alum. Anti-Roll Bar Ball (4)
PA503138	5x7mm Ball Stud (6)-Black
PA507109	Alum. Spur Gear Holder
PA507110	20T Pulley (2)
PA507114	Diff. Case Gasket (4)
PA507115	Diff. Case O-ring (4)
PA507116	Belt Tension Adjuster (4)
PA507127H	Front Suspension Arm-Hard Material (2)
PA507130	Front Anti-roll Bar Rod (2)
PA507136	Bushing For Caster Block (2+2)
PA507138	Universal Driveshaft Plastic Pin Cover (8)
PA507139	Steering Block (2)
PA507140	Alum. Wheel Adapter-BK (4)
PA507141	Caster Block Pin (2)
PA507142	Rear Hub Carrier (2)
PA507143	Rear Hub Carrier Pin (2)
PA507147	Servo Arm (Futaba) (2)
PA507148	Servo Arm (Ko,Sanwa) (2)
PA507152	Quick Release Battery Strap

Item No.	Item Description
PA507161	Shock Membrane (4)
PA507162	Front Body Support (2)
PA507163	Foam Bumper
PA507164	Bumper Mount Set
PA507202	Alum. Motor Bulkhead
PA507206	Light Weight Bevel Gear Set (4)
PA507207	Light Weight Diff. Case
PA507208	Light Weight Alum. Diff. Joint (2)
PA507209	Light Weight Gear Diff. Set
PA507210	Front Spool 38T Pulley
PA507211	Front Spool Pulley Holder
PA507212	Front Spool ST Steel Joints (2)
PA507213	Front Spool Set
PA507217	Rear Body Support (2)
PA507218	Anti-Roll Bar Ball Cup (4)
PA507219	Caster Block (4 degree) (2)
PA507222	Rear Anti-Roll Bar 1.2mm (1)
PA507223	Alum. One Piece Servo Mount
PA507227	Shock Piston 3 Holes (1.1mm)(4)
PA507228	Low CG Shock Shaft (2)
PA507233	Low CG Shock Ball End & Nylon Set (4)
PA507234	Universal Driveshaft Nunchaku Type (2)
PA507234-1	Drive Shaft Only for Nunchaku (2)
PA507234-2	Joint for Nunchaku (2)
PA507234-3	Wheel Axel for Nunchaku (2)
PA507234-4	Joint Hinge Pin for Nunchaku (4)
PA507234-5	G-Clip for Nunchaku (4)
PA507234-6	1.5x8.5mm Pin for Nunchaku (4)
PA507234-7	5x10x3mm Bearing for Nunchaku (2)
PA507258	Front Anti Roll Bar 1.3mm
PA507301	Chassis 2.3mm
PA507302	FR/RL Lower Bulkhead
PA507303	FL/RR Lower Bulkhead
PA507304	Center Battery Guides (2)
PA507305	Steering Lower Floating Mount
PA507306	Rear Belt
PA507307	Front Belt
PA507308	Upper Bulkhead
PA507309	4mm Front Shock Tower
PA507310	4mm Rear Shock Tower
PA507311	"Alum. Middle Steering Plate
PA507312	"5mm Ball Cup (6)
PA507313	Front Suspension Axle (2)
PA507314	FF/RR Suspension Mount
PA507315	Suspension Mount Inserts (0,0.2,0.4)
PA507316	Suspension Mount Pivot Ball (4)
PA507317	FR/RF Suspension Mount
PA507318	Rear Suspension Axle (2)
PA507319H	Rear Lightweight Arms (2)
PA507320	Rear DriveShafts (2)
PA507320-1	Steel Drive Shaft Only (2)
PA507320-2	Pivot for 507320 (4)
PA507320-3	G-Clip for Universal Driveshaft (4)
PA507320-4	Steel Universal Joint Outdriver (2)
PA507321	Anti-Roll Bar Retainers (2)
PA507322	"L" Type Servo Ball Cup (2)
PA507323	2.0mm Upper Deck
PA507324	Battery Mount System
PA507325	Plastic Steering Levers
PA507326	Steering Lever Post (2)
PA507327	Shock Absorber Set (2)
PA507327-1	Shock Upper Cap (2)
PA507327-2	Shock Body Set (2)
PA507327-3	Shock Small O ring Set (4)
PA507327-4	Shock Lower Cap (2)
PA507328	Lower Spring Cups with lowered spring height (4)
PA507329	Right Middle Axle Mount
PA507330	Left Middle Axle Mount
PA507331	Motor Plate Support
PA507422	Antenna Rod Mount
PAK4901-25	LX Touring Shock Spring 13x23.5mm #25
PAK4901-27	LX Touring Shock Spring 13x23.5mm #27
PAK6310-400	Shock Oil 70ml/2.5oz #400
PAK6330-1000	Diff Oil 40ml #1000
PAK6330-500000	Diff Oil 30ml #500000
PAK6601-110	Special Precision 64P Spur Gear 110T





<http://bmt-team.com>  
mail:info@bmt-team.com